

AENC-LSTC-ENG-DWG-0002

Norwich to Tilbury

Volume 2: Plans, Drawings and Sections

**Document: 2.16 Trees and Hedgerows to be Removed and or
Managed Plans - Section H - Clean Version**

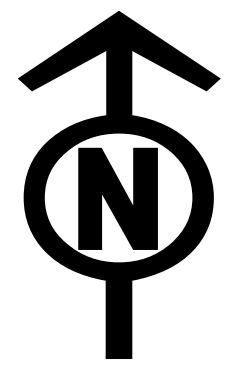
Final Issue C

June 2026

Planning Inspectorate Reference: EN020027

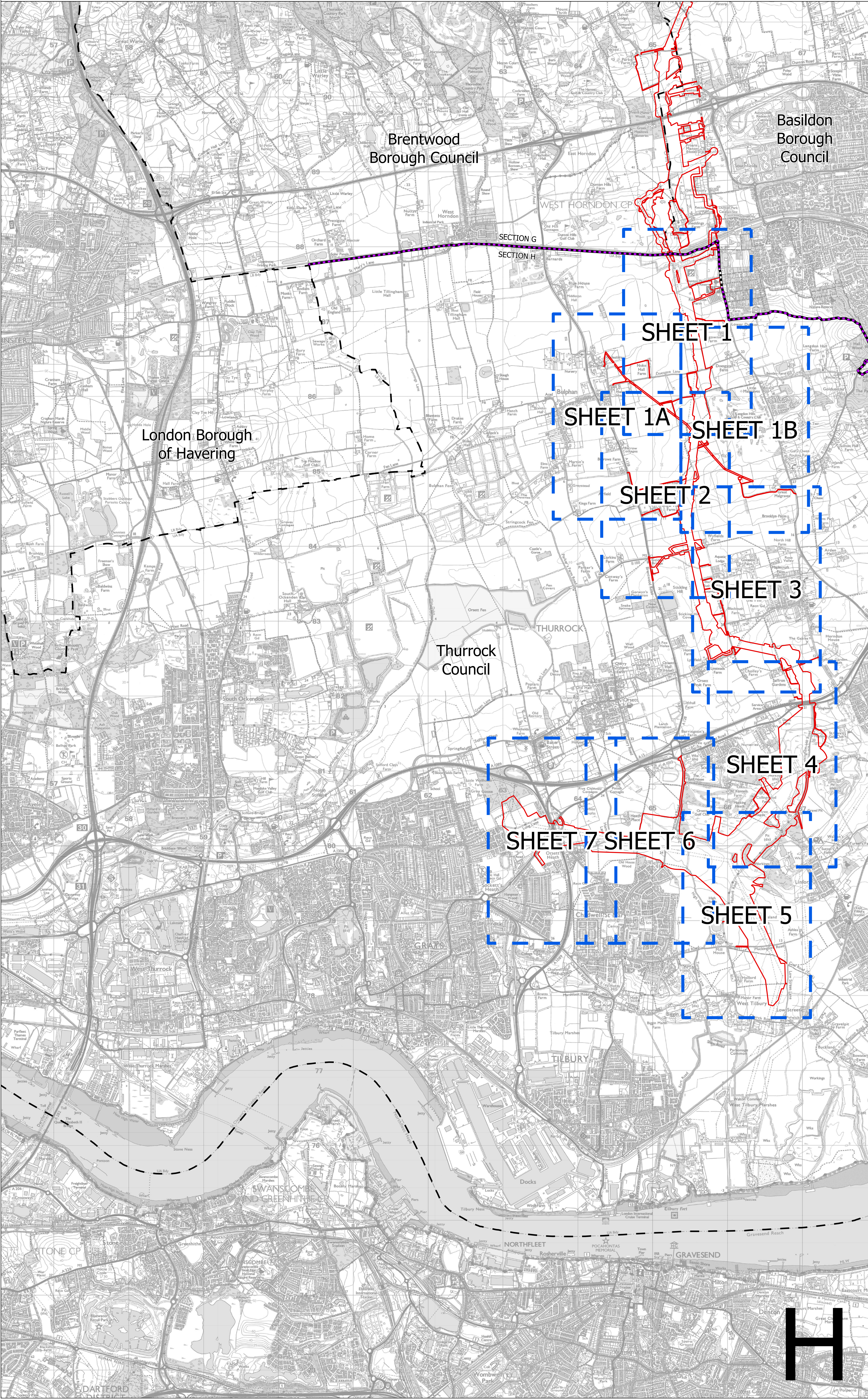
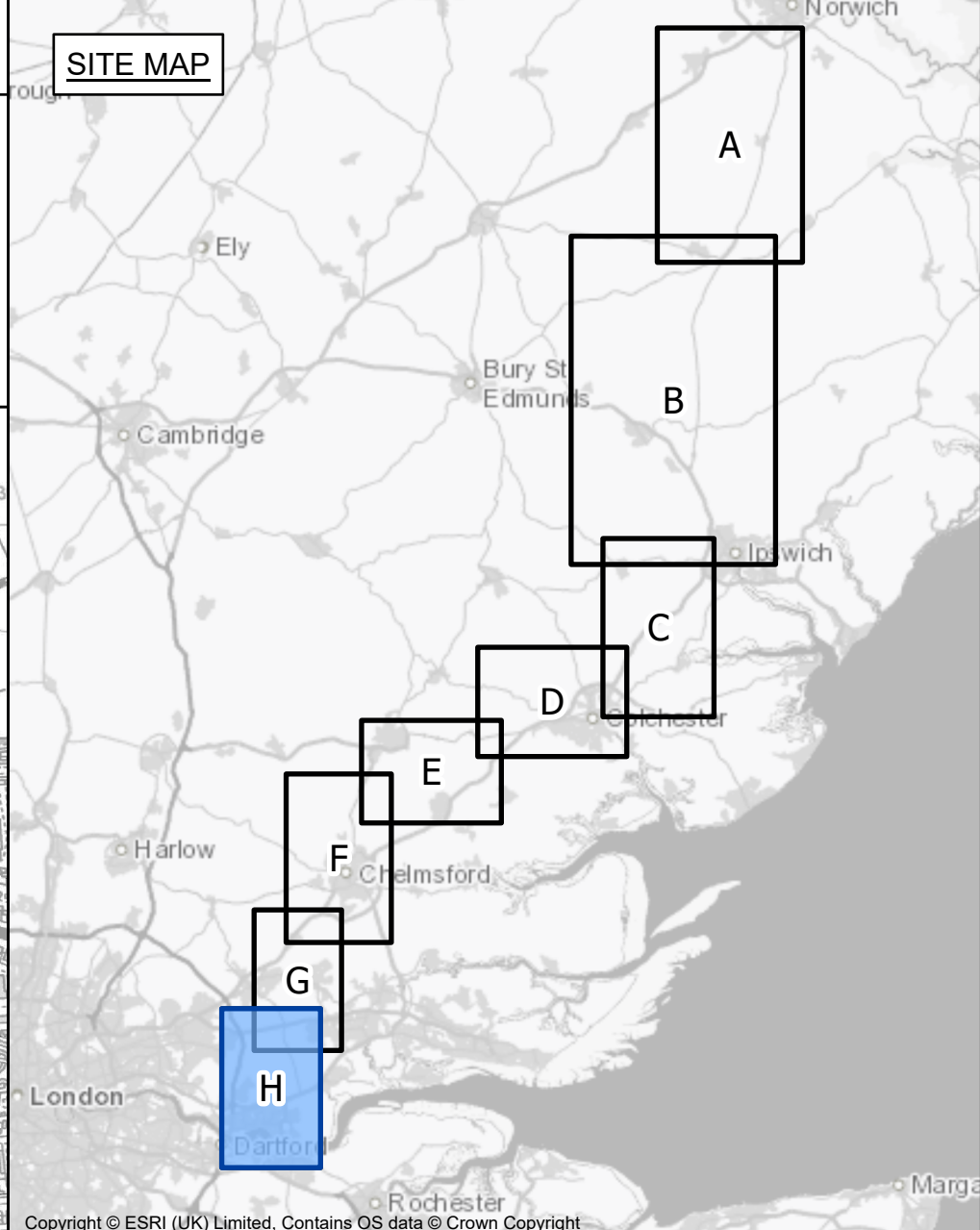
**Infrastructure Planning (Applications: Prescribed Forms and Procedure)
Regulations 2009 Regulation 5(2)(c)**

nationalgrid



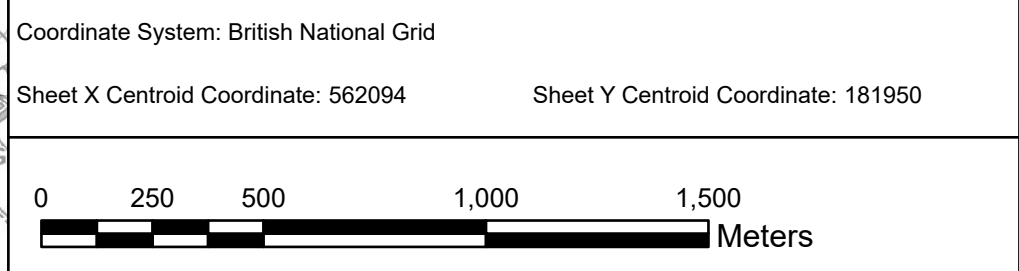
THE NATIONAL GRID (NORWICH TO TILBURY) ORDER
 TREES AND HEDGEROWS TO BE REMOVED AND OR MANAGED PLANS KEY PLAN
 REGULATION 5(2)(o)
 SECTION H (SHEET 1 OF 1,
 BRENTWOOD BOROUGH COUNCIL, BASILDON BOROUGH COUNCIL AND THURROCK COUNCIL)

Application Document 2.16



- Legend**
- - Local authority boundary
 - - Section boundary & local authority boundary
 - - Section boundary
 - Sheet Index
 - Order Limits

- Notes**
1. These plans are indicative and the Project will sit within the Order Limits. Due to the need for future flexibility, National Grid will be applying for Order Limits and Limits of Deviation within its DCO, within which any final alignment would lie.
 2. For additional detail on the plan suites, please refer to the Guide to Plans (document reference 2.0), located in the Volume 2 of the DCO application.
 3. This drawing is scaled at paper size A0, therefore any prints taken at smaller sizes will affect accuracy of the measurement units and should not be scaled against.



BACKGROUND MAPPING INFORMATION HAS BEEN REPRODUCED FROM THE ORDNANCE SURVEY BY PERMISSION OF ORDNANCE SURVEY OF THE CONTROLLER OF HIS MAJESTY'S STATIONERY OFFICE. © CROWN COPYRIGHT AND DATABASE RIGHTS (2025) LICENCE OS100024241 AND AC0000807948.

Issue	Date	Remarks	Drawn	Checked	Approved
C	JUN-2026	For deadline five	TMH	JPC	KR
B	MAY-2026	For deadline four	TMH	JPC	KR
A	AUG-2025	For DCO submission	EOS	JPC	KR

Title
 THE NATIONAL GRID (NORWICH TO TILBURY) ORDER
 TREES AND HEDGEROWS TO BE REMOVED AND OR MANAGED PLANS KEY PLAN
 REGULATION 5(2)(o)
 SECTION H (SHEET 1 OF 1,
 BRENTWOOD BOROUGH COUNCIL,
 BASILDON BOROUGH COUNCIL AND THURROCK COUNCIL)

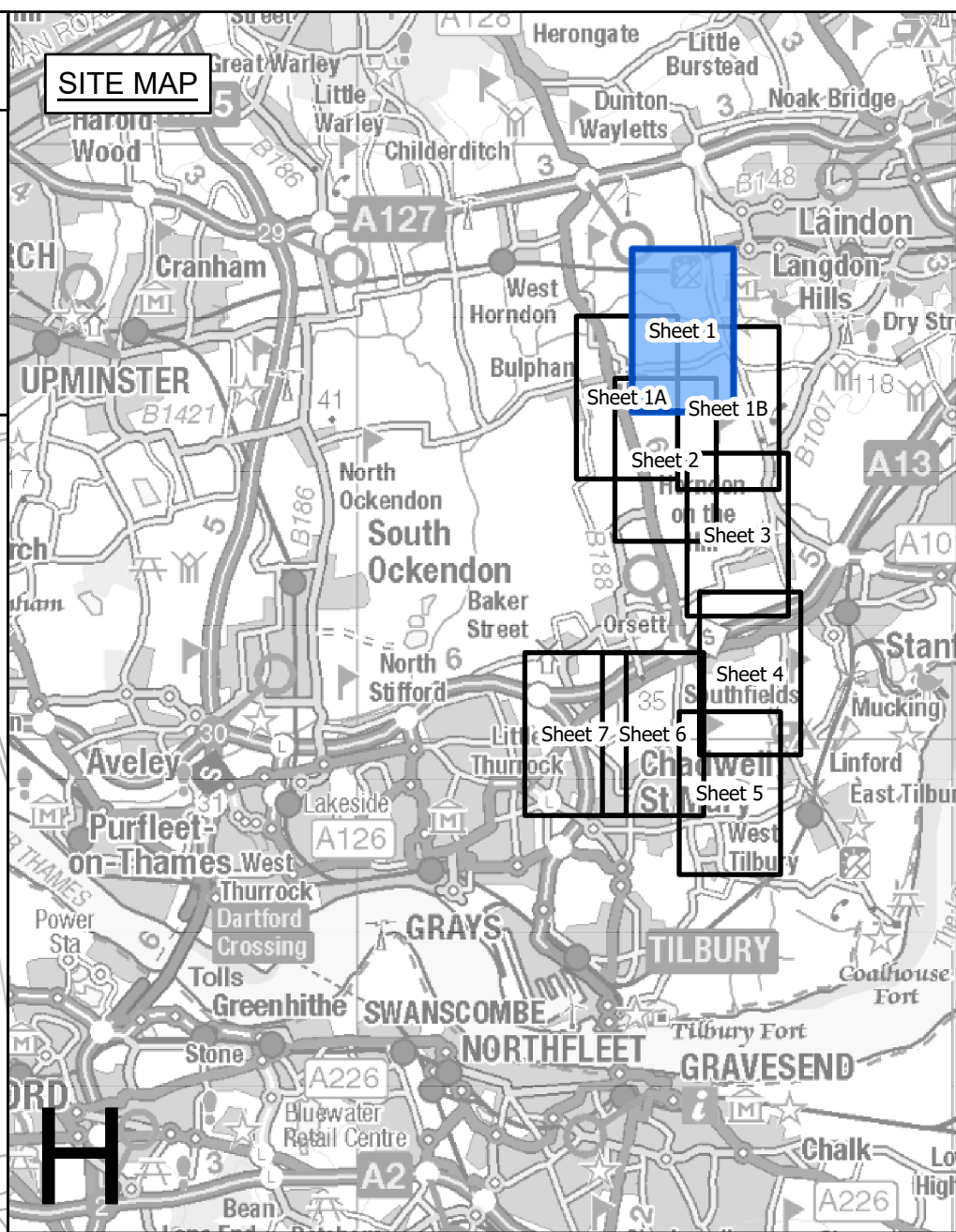
nationalgrid
 PINS Application Number: EN020027
 National Grid Drawing Reference: AENC-LSTC-ENG-DWG-0002

Scale	Sheet Size	Sheet	Issue
1:17,000	A0	SHEET 1 OF 1	C

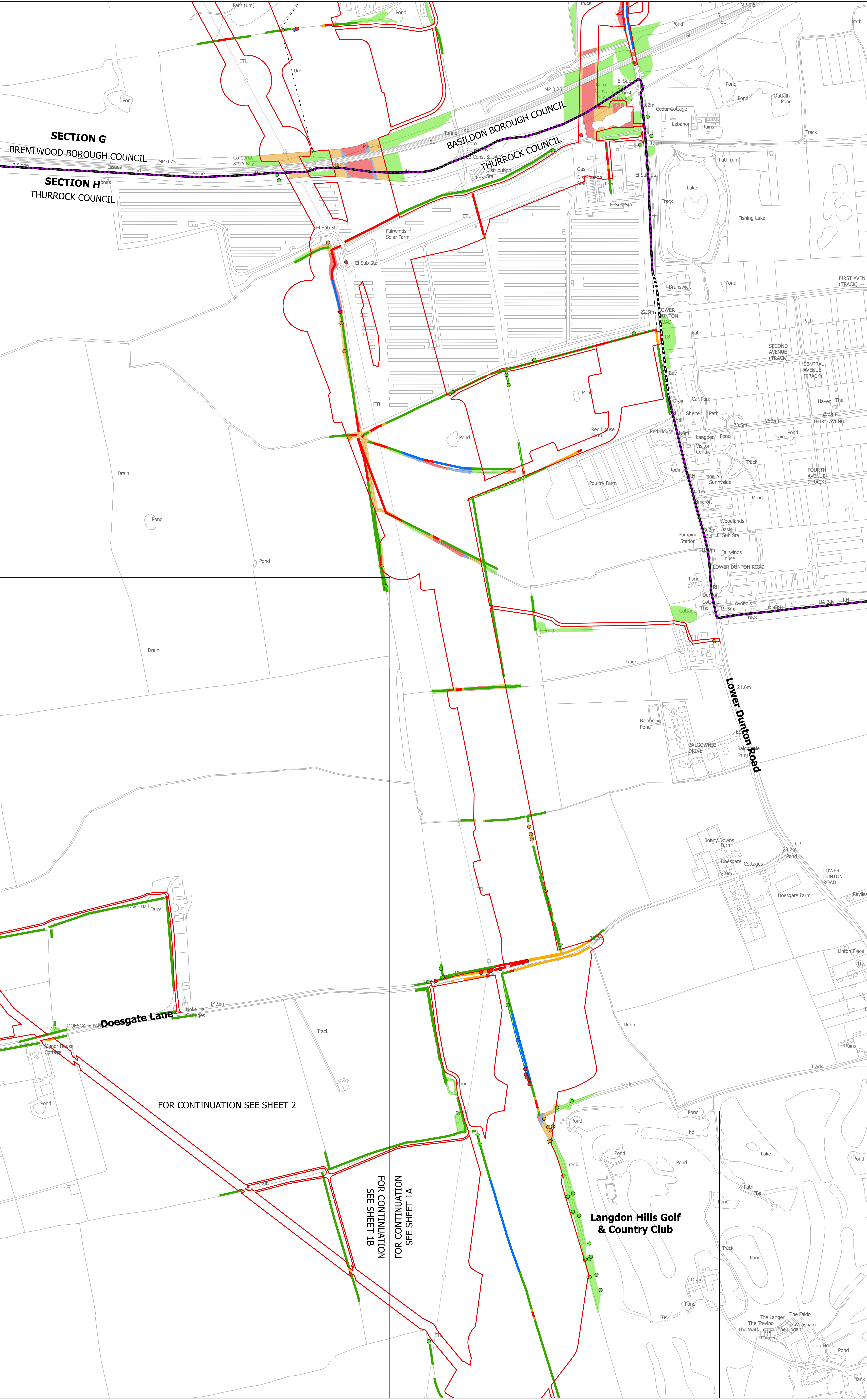


THE NATIONAL GRID (NORWICH TO TILBURY) ORDER
 TREES AND HEDGEROWS TO BE REMOVED AND OR MANAGED PLANS
 REGULATION 5(2)(o)
 SECTION H (SHEET 1 OF 7,
 BRENTWOOD BOROUGH COUNCIL, BASILDON BOROUGH COUNCIL AND THURROCK COUNCIL)

Application Document 2.16



H



Legend

- Local authority boundary
- Section boundary & local authority boundary
- Section boundary
- Sheet index outlines
- Order Limits
- Individual Tree Preservation Order
- Tree Preservation Order groups
- Project defined ancient woodland as per DCO submission
- Important hedgerows

Veteran tree

- Removed
- Affected managed
- Potentially affected
- Unaffected

Tree

- Removed
- Affected managed
- Potentially affected
- Unaffected

Tree groups

- Removed
- Affected managed
- Potentially affected
- Unaffected

Hedgerows

- Removed
- Affected managed
- Potentially affected
- Unaffected

- Notes**
- These plans are indicative and the Project will sit within the Order Limits. Due to the need for future flexibility, National Grid will be applying for Order Limits and Limits of Deviation within its DCO, within which any final alignment would lie.
 - For additional detail on the plan suites, please refer to the Guide to Plans (document reference 2.0), located in the Volume 2 of the DCO application.
 - This drawing is scaled at paper size A0, therefore any prints taken at smaller sizes will affect accuracy of the measurement units and should not be scaled against.
 - Spatial locations and details of Tree Preservation Orders have been provided by relevant Local Planning Authorities and their projected spatial locations may differ slightly to those recorded during the arboricultural survey undertaken by the Project. For the avoidance of doubt, references to any tree subject to a Tree Preservation Order on these plans include any such slight differences.
 - The Tree Preservation Order data illustrated on the plans is limited to the arboriculture study area (which applies a 30 m buffer from the outer edge of the Order Limits).
 - Reference to any tree, shrub, shrubby, hedgerow, or important hedgerow being removed, affected managed, potentially affected or unaffected is without prejudice to the exercise of any power in relation to such tree, shrub, shrubby, hedgerow, or important hedgerow on the terms of the DCO.
 - The numbered references to trees comprised in any Individual Tree Preservation Order shown on these plans include any tree to which the relevant line points as well as any tree overlapping any such tree, whether or not a line points to it or not.
 - For the avoidance of doubt, where the section and/or local authority boundary and/or Order Limits shown on these plans overlap any tree, hedgerow or ancient woodland shown on these plans such that they are partially obscured these plans are to be interpreted as if the tree, hedgerow or ancient woodland in question is not so obscured.

Coordinate System: British National Grid
 Sheet X Centroid Coordinate: 565485 Sheet Y Centroid Coordinate: 196862

0 50 100 150 200 250 Metres

BACKGROUND MAPPING INFORMATION HAS BEEN REPRODUCED FROM THE ORDNANCE SURVEY BY PERMISSION OF ORDNANCE SURVEY OF THE CONTROLLER OF HIS MAJESTY'S STATIONERY OFFICE. © CROWN COPYRIGHT AND DATABASE RIGHTS (2025) LICENCE OS100024241 AND AC000807948.

Issue	Date	Remarks	Drawn	Checked	Approved
C	JUN-2026	For deadline five	TMH	JPC	KR
B	MAY-2026	For deadline four	TMH	JPC	KR
A	AUG-2025	For DCO submission	EOS	JPC	KR

Title
 THE NATIONAL GRID (NORWICH TO TILBURY) ORDER
 TREES AND HEDGEROWS TO BE REMOVED
 AND OR MANAGED PLANS
 REGULATION 5(2)(o)
 SECTION H (SHEET 1 OF 7,
 BRENTWOOD BOROUGH COUNCIL,
 BASILDON BOROUGH COUNCIL
 AND THURROCK COUNCIL)

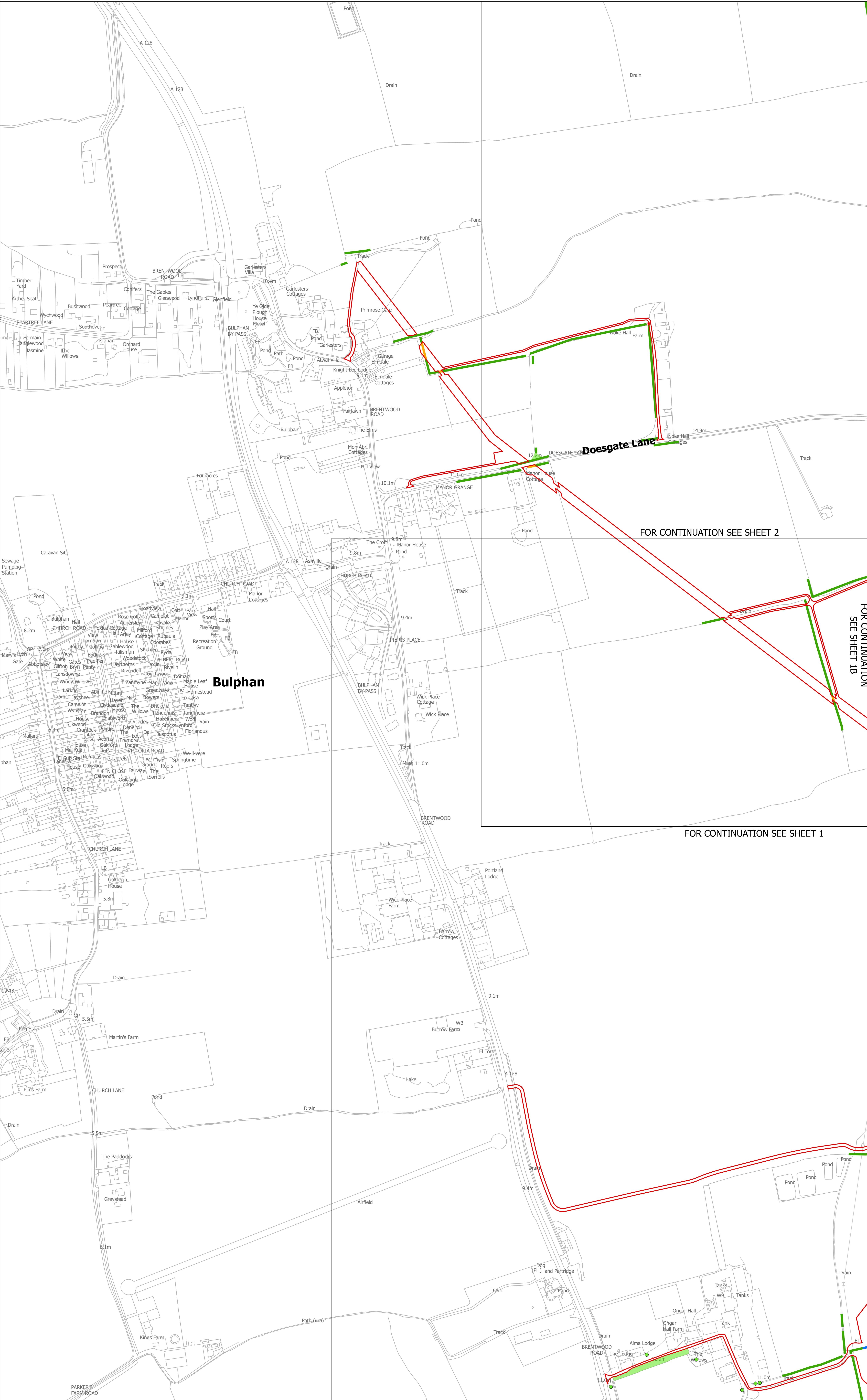
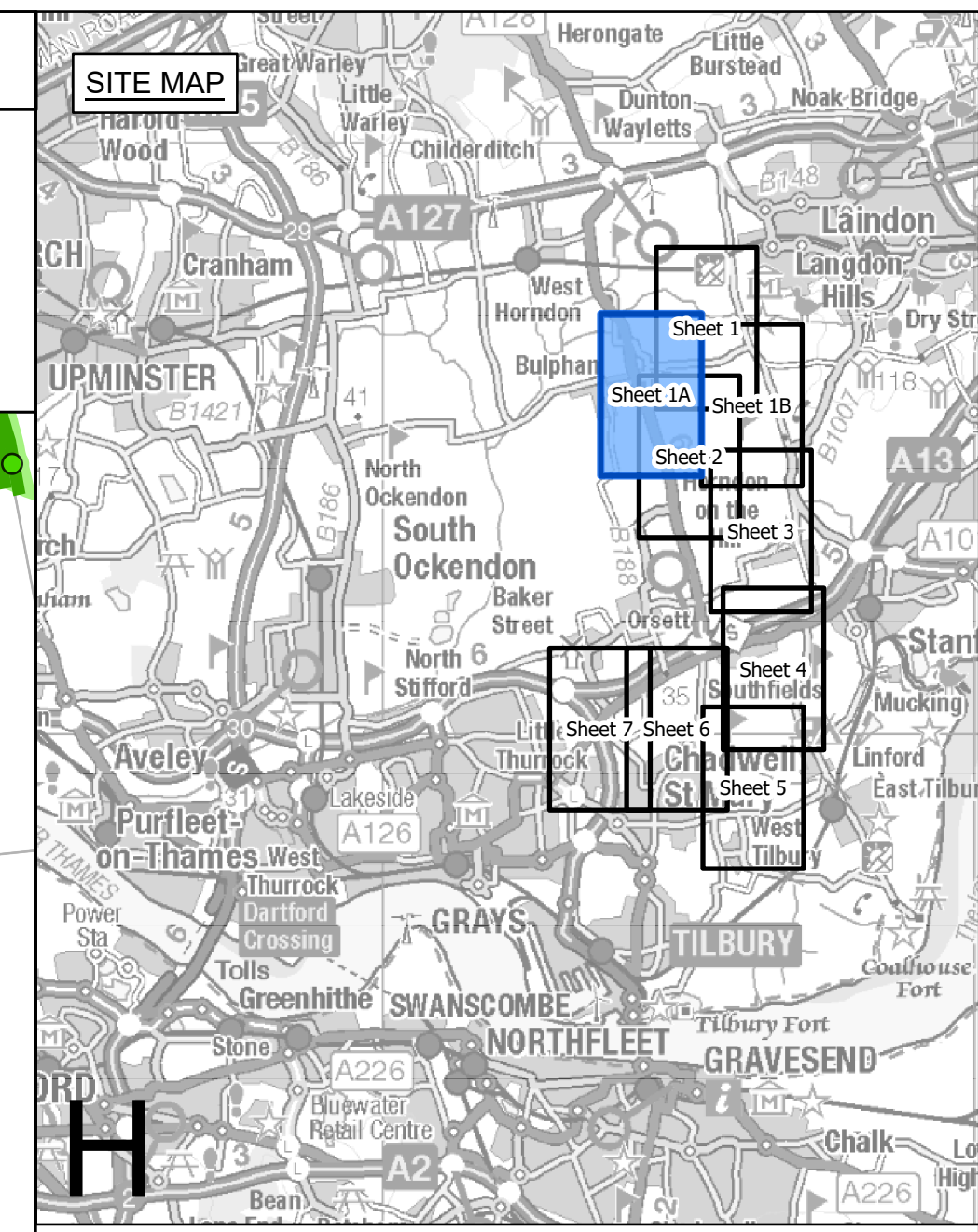
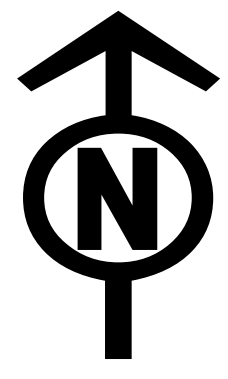
nationalgrid

PINS Application Number
 EN020027

National Grid Drawing Reference
 AENC-LSTC-ENG-DWG-0002

Scale	Sheet Size	Sheet	Issue
1:2,500	A0	SHEET 1 OF 7	C

THE NATIONAL GRID (NORWICH TO TILBURY) ORDER
 TREES AND HEDGEROWS TO BE REMOVED AND OR MANAGED PLANS
 REGULATION 5(2)(o)
 SECTION H (SHEET 1A OF 7,
 THURROCK COUNCIL)



Legend

- Local authority boundary
- Section boundary & local authority boundary
- Section boundary
- Sheet index outlines
- Order Limits
- Individual Tree Preservation Order
- Tree Preservation Order groups
- Project defined ancient woodland as per DCO submission
- Important hedgerows

Veteran tree

- Removed
- Affected managed
- Potentially affected
- Unaffected

Tree

- Removed
- Affected managed
- Potentially affected
- Unaffected

Tree groups

- Removed
- Affected managed
- Potentially affected
- Unaffected

Hedgerows

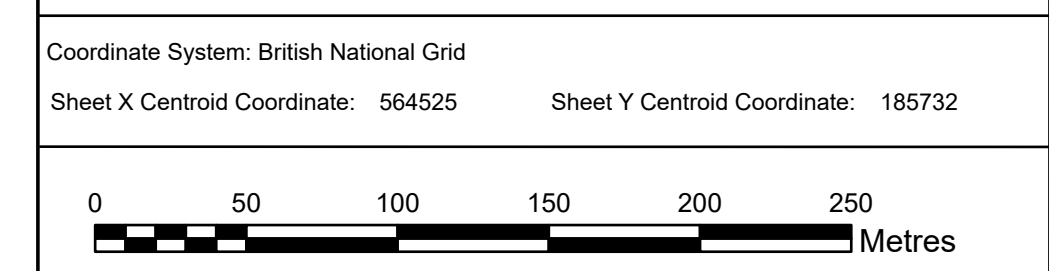
- Removed
- Affected managed
- Potentially affected
- Unaffected

FOR CONTINUATION SEE SHEET 2

FOR CONTINUATION SEE SHEET 1B

FOR CONTINUATION SEE SHEET 1

- Notes**
- These plans are indicative and the Project will sit within the Order Limits. Due to the need for future flexibility, National Grid will be applying for Order Limits and Limits of Deviation within its DCO, within which any final alignment would lie.
 - For additional detail on the plan suites, please refer to the Guide to Plans (document reference 2.0), located in the Volume 2 of the DCO application.
 - This drawing is scaled at paper size A0, therefore any prints taken at smaller sizes will affect accuracy of the measurement units and should not be scaled against.
 - Spatial locations and details of Tree Preservation Orders have been provided by relevant Local Planning Authorities and their projected spatial locations may differ slightly to those recorded during the arboricultural survey undertaken by the Project. For the avoidance of doubt, references to any tree subject to a Tree Preservation Order on these plans include any such slight differences.
 - The Tree Preservation Order data illustrated on the plans is limited to the arboricultural study area (which applies a 30 m buffer from the outer edge of the Order Limits).
 - Reference to any tree, shrub, shrubbery, hedgerow, or important hedgerow being removed, affected managed, potentially affected or unaffected is without prejudice to the exercise of any power in relation to such tree, shrub, shrubbery, hedgerow, or important hedgerow on the terms of the DCO.
 - The numbered references to trees comprised in any Individual Tree Preservation Order shown on these plans include any tree to which the relevant line points as well as any tree overlapping any such tree, whether or not a line points to it or not.
 - For the avoidance of doubt, where the section and/or local authority boundary and/or Order Limits shown on these plans overlap any tree, hedgerow or ancient woodland shown on these plans such that they are partially obscured these plans are to be interpreted as if the tree, hedgerow or ancient woodland in question is not so obscured.



BACKGROUND MAPPING INFORMATION HAS BEEN REPRODUCED FROM THE ORDNANCE SURVEY BY PERMISSION OF ORDNANCE SURVEY OF THE CONTROLLER OF HIS MAJESTY'S STATIONERY OFFICE. © CROWN COPYRIGHT AND DATABASE RIGHTS (2025) LICENCE OS100024241 AND AC0000807948.

Issue	Date	Remarks	Drawn	Checked	Approved
C	JUN-2026	For deadline five	TMH	JPC	KR
B	MAY-2026	For deadline four	TMH	JPC	KR
A	AUG-2025	For DCO submission	EOS	JPC	KR

Title

THE NATIONAL GRID
 (NORWICH TO TILBURY) ORDER
 TREES AND HEDGEROWS TO BE REMOVED
 AND OR MANAGED PLANS
 REGULATION 5(2)(o)
 SECTION H (SHEET 1A OF 7,
 THURROCK COUNCIL)

nationalgrid

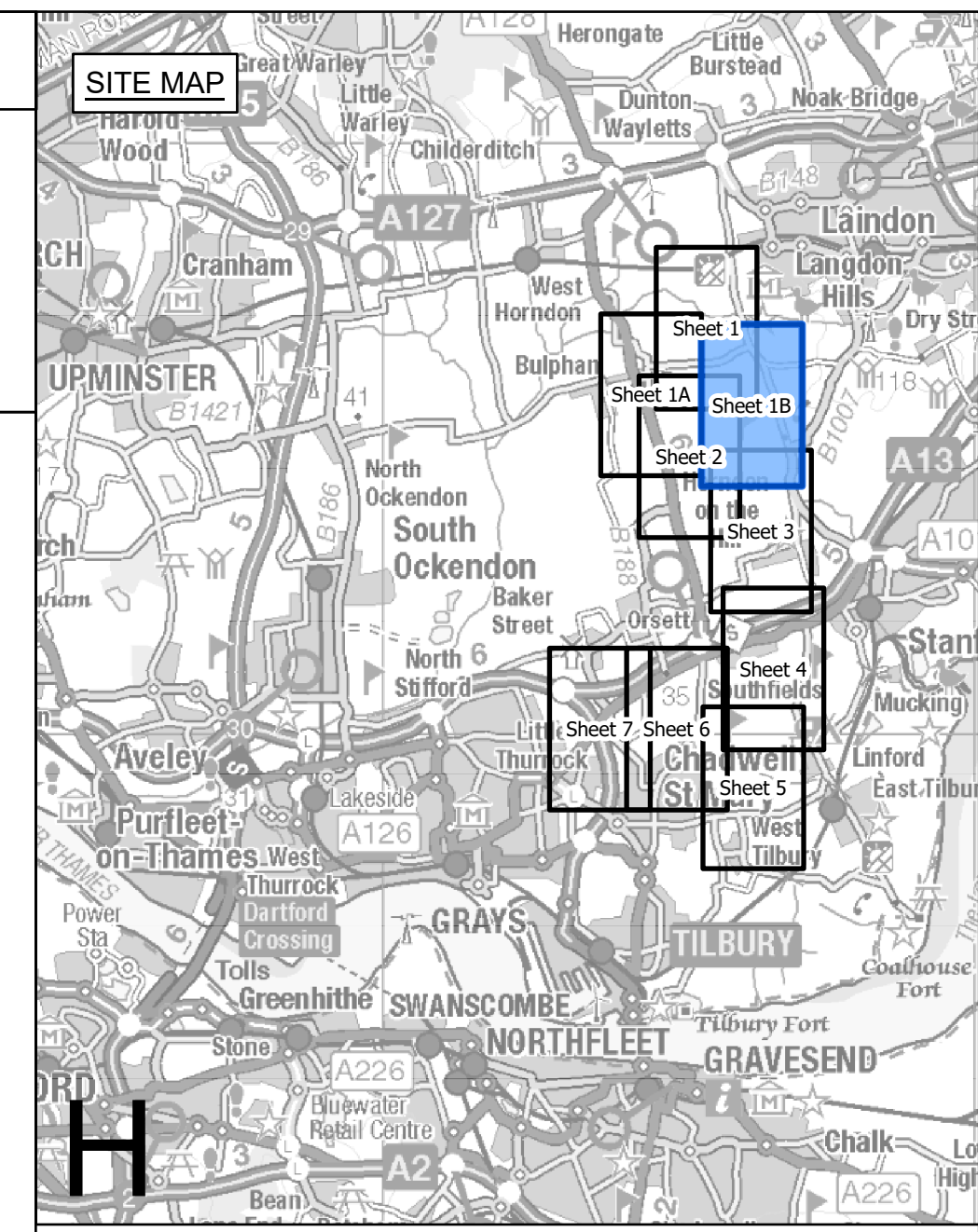
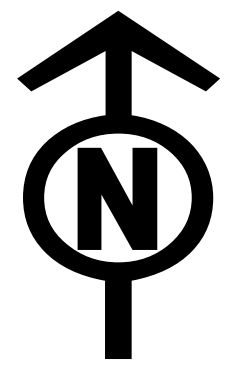
PINS Application Number
 EN020027

National Grid Drawing Reference
 AENC-LSTC-ENG-DWG-0002

Scale	Sheet Size	Sheet	Issue
1:2,500	A0	SHEET 1A OF 7	C

THE NATIONAL GRID (NORWICH TO TILBURY) ORDER
 TREES AND HEDGEROWS TO BE REMOVED AND OR MANAGED PLANS
 REGULATION 5(2)(o)
 SECTION H (SHEET 1B OF 7,
 THURROCK COUNCIL)

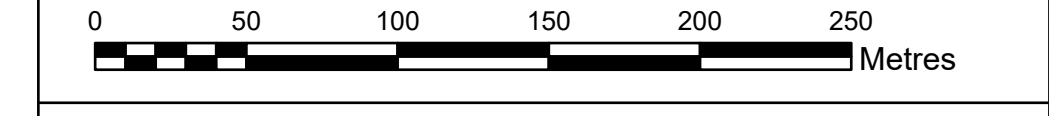
Application Document 2.16



- Legend**
- - Local authority boundary
 - Section boundary & local authority boundary
 - Section boundary
 - Sheet index outlines
 - Order Limits
 - Individual Tree Preservation Order
 - Tree Preservation Order groups
 - Project defined ancient woodland as per DCO submission
 - Important hedgerows
 - Veteran tree**
 - ★ Removed
 - ★ Affected managed
 - ★ Potentially affected
 - ★ Unaffected
 - Tree**
 - Removed
 - Affected managed
 - Potentially affected
 - Unaffected
 - Tree groups**
 - Removed
 - Affected managed
 - Potentially affected
 - Unaffected
 - Hedgerows**
 - Removed
 - Affected managed
 - Potentially affected
 - Unaffected

- Notes**
- These plans are indicative and the Project will sit within the Order Limits. Due to the need for future flexibility, National Grid will be applying for Order Limits and Limits of Deviation within its DCO, within which any final alignment would lie.
 - For additional detail on the plan suites, please refer to the Guide to Plans (document reference 2.0), located in the Volume 2 of the DCO application.
 - This drawing is scaled at paper size A0, therefore any prints taken at smaller sizes will affect accuracy of the measurement units and should not be scaled against.
 - Spatial locations and details of Tree Preservation Orders have been provided by relevant Local Planning Authorities and their projected spatial locations may differ slightly to those recorded during the arboricultural survey undertaken by the Project. For the avoidance of doubt, references to any tree subject to a Tree Preservation Order on these plans include any such slight differences.
 - The Tree Preservation Order data illustrated on the plans is limited to the arboriculture study area (which applies a 30 m buffer from the outer edge of the Order Limits).
 - Reference to any tree, shrub, shrubbery, hedgerow, or important hedgerow being removed, affected managed, potentially affected or unaffected is without prejudice to the exercise of any power in relation to such tree, shrub, shrubbery, hedgerow, or important hedgerow on the terms of the DCO.
 - The numbered references to trees comprised in any Individual Tree Preservation Order shown on these plans include any tree to which the relevant line points as well as any tree overlapping any such tree, whether or not a line points to it or not.
 - For the avoidance of doubt, where the section and/or local authority boundary and/or Order Limits shown on these plans overlap any tree, hedgerow or ancient woodland shown on these plans such that they are partially obscured these plans are to be interpreted as if the tree, hedgerow or ancient woodland in question is not so obscured.

Coordinate System: British National Grid
 Sheet X Centroid Coordinate: 566230 Sheet Y Centroid Coordinate: 185555



BACKGROUND MAPPING INFORMATION HAS BEEN REPRODUCED FROM THE ORDNANCE SURVEY BY PERMISSION OF ORDNANCE SURVEY OF THE CONTROLLER OF HIS MAJESTY'S STATIONERY OFFICE. © CROWN COPYRIGHT AND DATABASE RIGHTS (2025) LICENCE OS100024241 AND AC0000807948.

Issue	Date	Remarks	Drawn	Checked	Approved
C	JUN-2026	For deadline five	TMH	JPC	KR
B	MAY-2026	For deadline four	TMH	JPC	KR
A	AUG-2025	For DCO submission	EOS	JPC	KR

Title

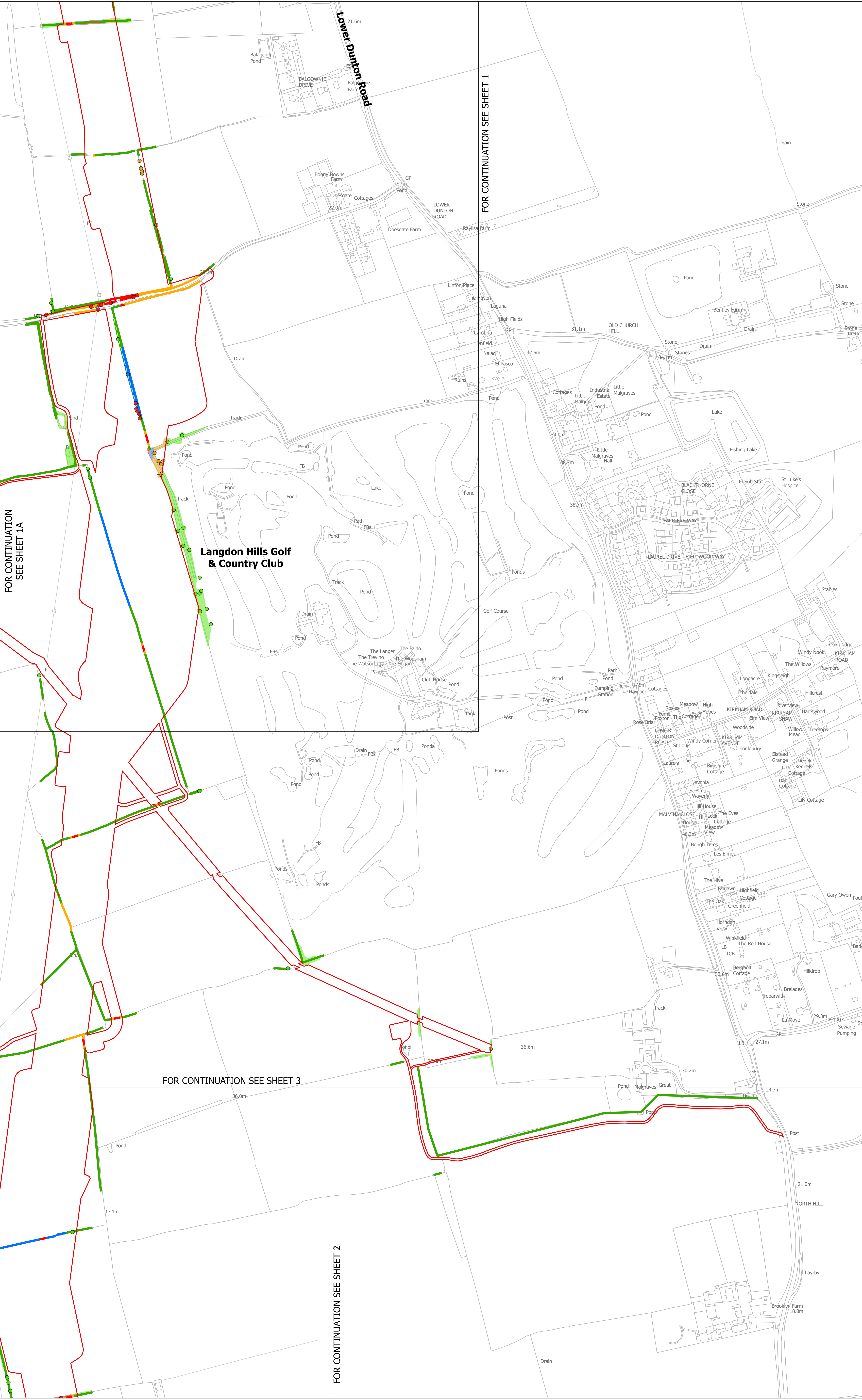
THE NATIONAL GRID
 (NORWICH TO TILBURY) ORDER
 TREES AND HEDGEROWS TO BE REMOVED
 AND OR MANAGED PLANS
 REGULATION 5(2)(o)
 SECTION H (SHEET 1B OF 7,
 THURROCK COUNCIL)

nationalgrid

PINS Application Number
 EN020027

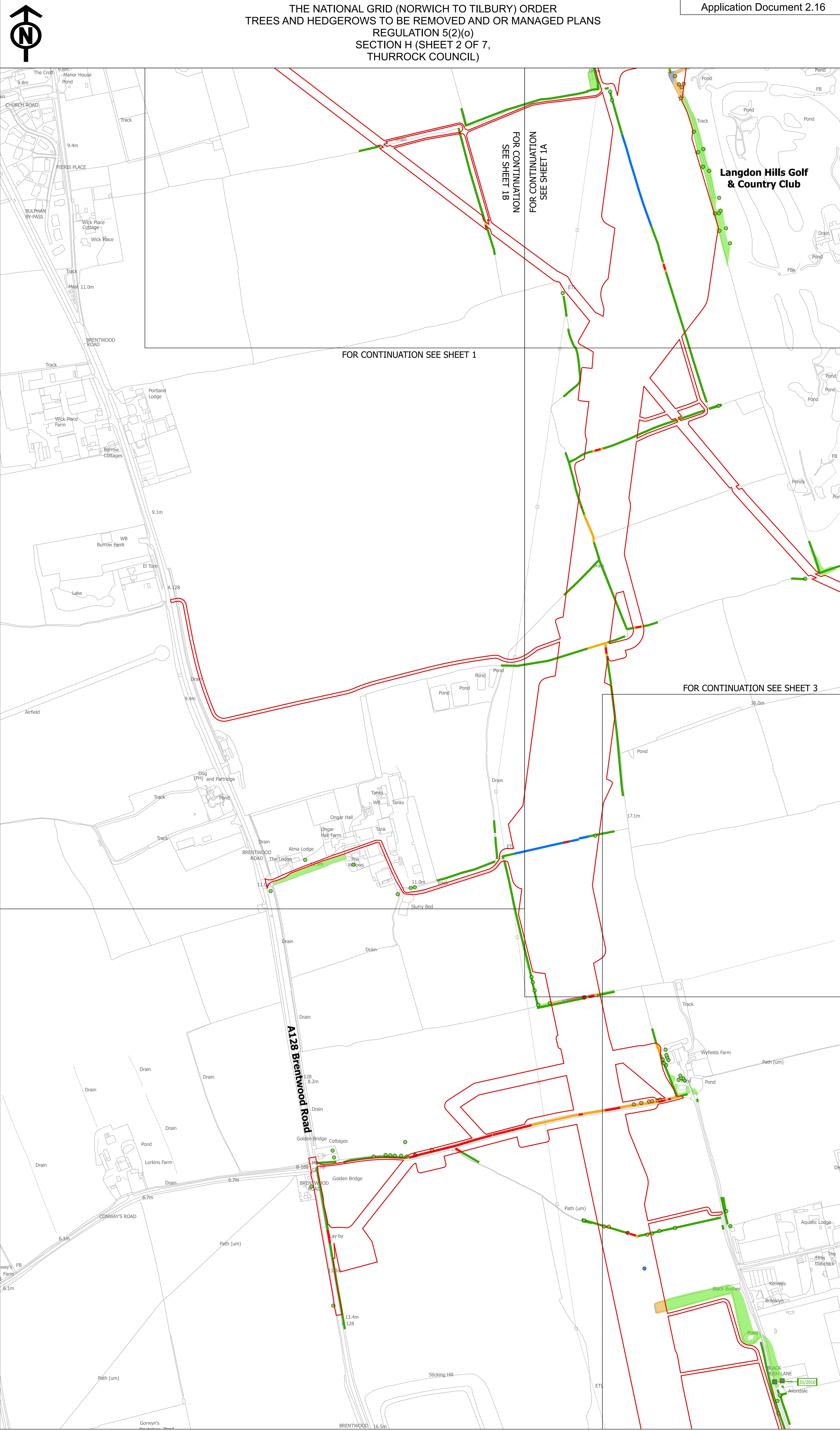
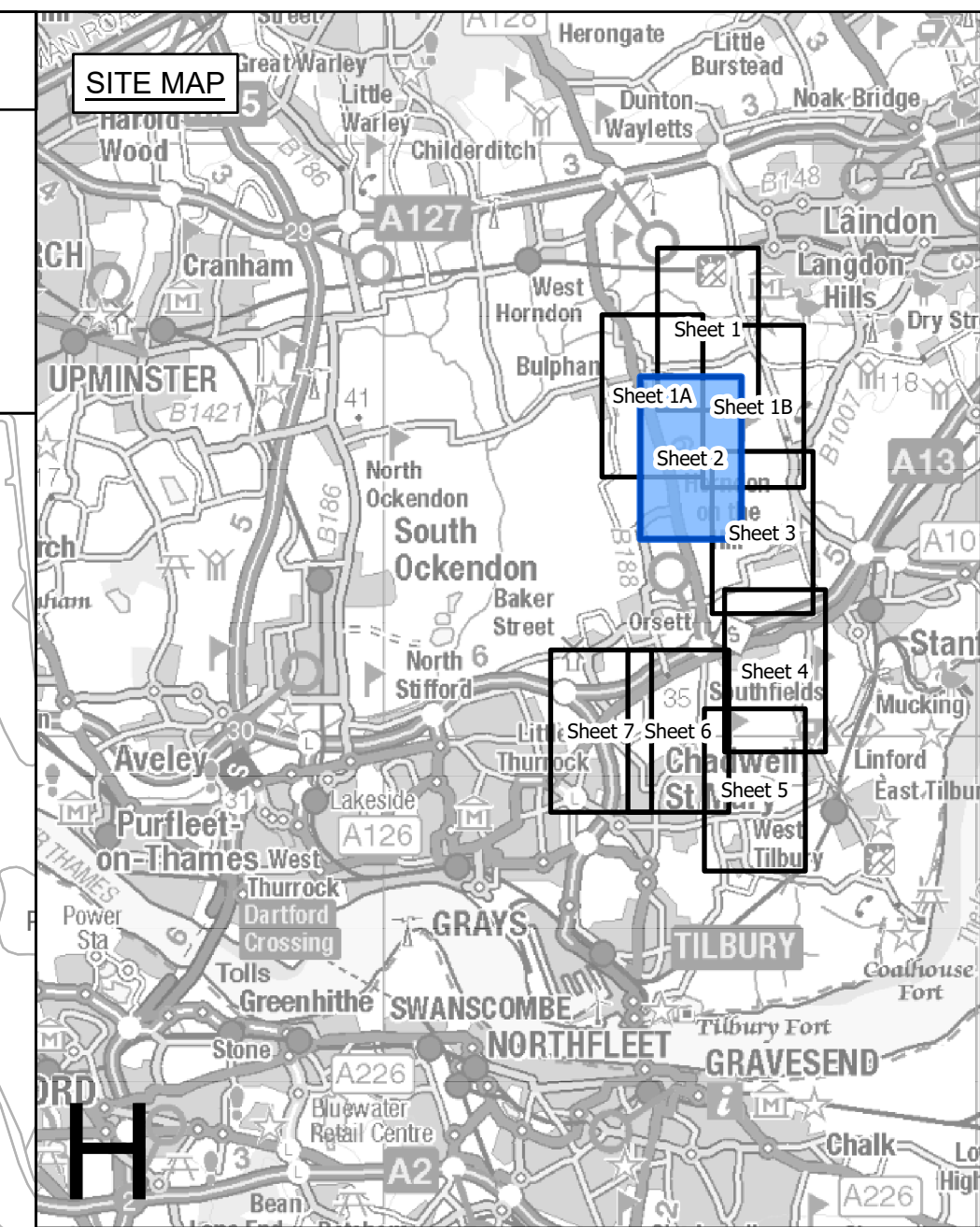
National Grid Drawing Reference
 AENC-LSTC-ENG-DWG-0002

Scale	Sheet Size	Sheet	Issue
1:2,500	A0	SHEET 1B OF 7	C



THE NATIONAL GRID (NORWICH TO TILBURY) ORDER
TREES AND HEDGEROWS TO BE REMOVED AND OR MANAGED PLANS
REGULATION 5(2)(c)
SECTION H (SHEET 2 OF 7,
THURROCK COUNCIL)

Application Document 2.16



Legend

- Local authority boundary
- Section boundary & local authority boundary
- Section index outlines
- Order Limits
- Individual Tree Preservation Order
- Tree Preservation Order groups
- Project defined ancient woodland as per DCO submission
- Important hedgerows

Veteran tree

- Removed
- Affected managed
- Potentially affected
- Unaffected

Tree

- Removed
- Affected managed
- Potentially affected
- Unaffected

Tree groups

- Removed
- Affected managed
- Potentially affected
- Unaffected

Hedgerows

- Removed
- Affected managed
- Potentially affected
- Unaffected

Notes

- These plans are indicative and the Project will sit within the Order Limits. Due to the need for future flexibility, National Grid will be applying for Order Limits and Limits of Deviation within its DCO, within which any final alignment would lie.
- For additional detail on the plan suites, please refer to the Guide to Plans (document reference 2.0), located in the Volume 2 of the DCO application.
- This drawing is scaled at paper size A0, therefore any prints taken at smaller sizes will affect accuracy of the measurement units and should not be scaled against.
- Spatial locations and details of Tree Preservation Orders have been provided by relevant Local Planning Authorities and their projected spatial locations may differ slightly to those recorded during the arboricultural survey undertaken by the Project. For the avoidance of doubt, references to any tree subject to a Tree Preservation Order on these plans include any such slight differences.
- The Tree Preservation Order data illustrated on the plans is limited to the arboriculture study area (which applies a 30 m buffer from the outer edge of the Order Limits).
- Reference to any tree, shrub, shrubbery, hedgerow, or important hedgerow being removed, affected managed, potentially affected or unaffected is without prejudice to the exercise of any power in relation to such tree, shrub, shrubbery, hedgerow, or important hedgerow on the terms of the DCO.
- The numbered references to trees comprised in any Individual Tree Preservation Order shown on these plans include any tree to which the relevant line points as well as any tree overlapping any such tree, whether or not a line points to it or not.
- For the avoidance of doubt, where the section and/or local authority boundary and/or Order Limits shown on these plans overlap any tree, hedgerow or ancient woodland shown on these plans such that they are partially obscured these plans are to be interpreted as if the tree, hedgerow or ancient woodland in question is not so obscured.

Coordinate System: British National Grid
Sheet X Centroid Coordinate: 565173 Sheet Y Centroid Coordinate: 194685

0 50 100 150 200 250 Metres

BACKGROUND MAPPING INFORMATION HAS BEEN REPRODUCED FROM THE ORDNANCE SURVEY BY PERMISSION OF ORDNANCE SURVEY OF THE CONTROLLER OF HIS MAJESTY'S STATIONERY OFFICE. © CROWN COPYRIGHT AND DATABASE RIGHTS (2025) LICENCE OS100024241 AND AC0000807948.

Issue	Date	Remarks	Drawn	Checked	Approved
C	JUN-2026	For deadline five	TMH	JPC	KR
B	MAY-2026	For deadline four	TMH	JPC	KR
A	AUG-2025	For DCO submission	EOS	JPC	KR

Title

THE NATIONAL GRID (NORWICH TO TILBURY) ORDER
TREES AND HEDGEROWS TO BE REMOVED
AND OR MANAGED PLANS
REGULATION 5(2)(c)
SECTION H (SHEET 2 OF 7,
THURROCK COUNCIL)

nationalgrid

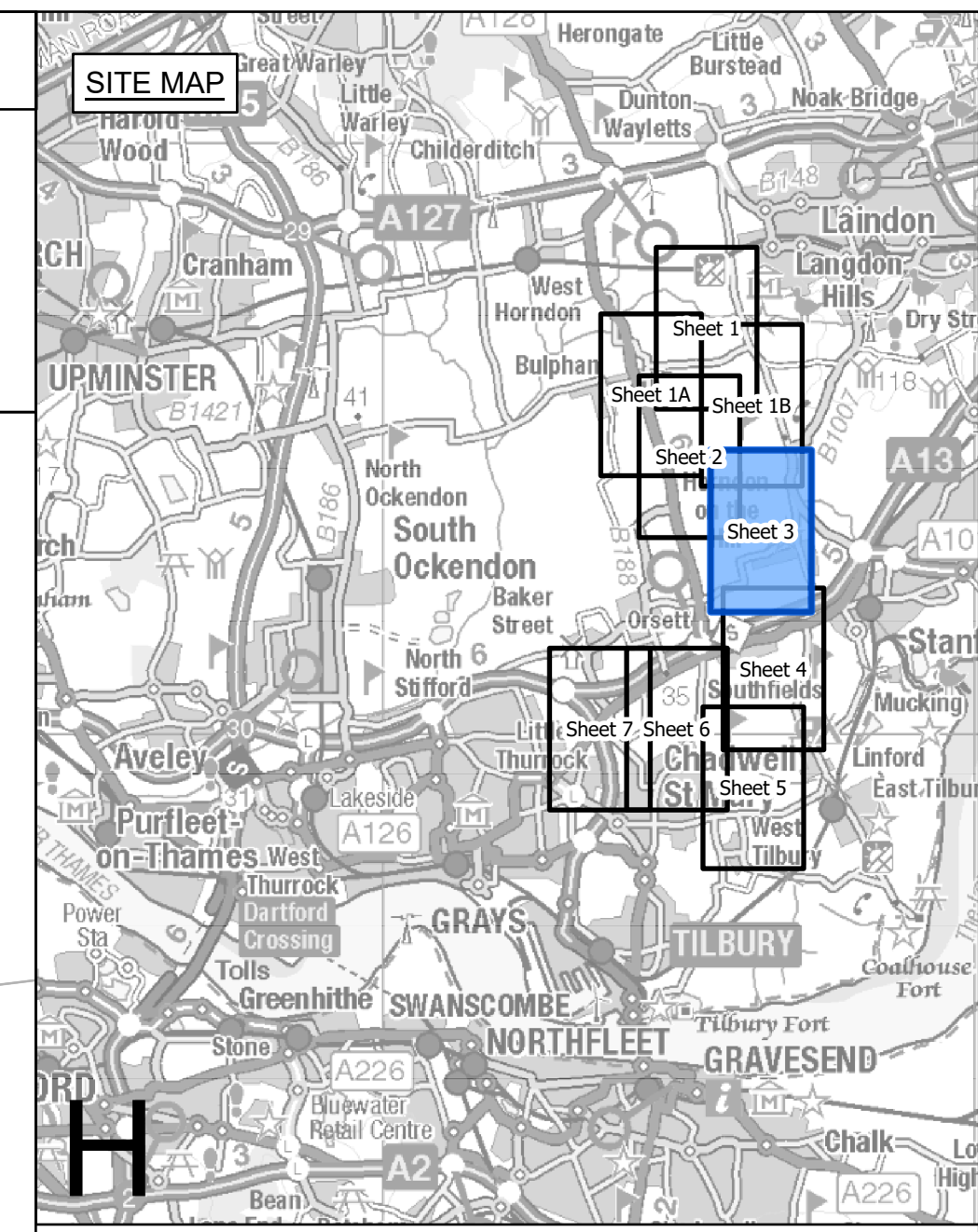
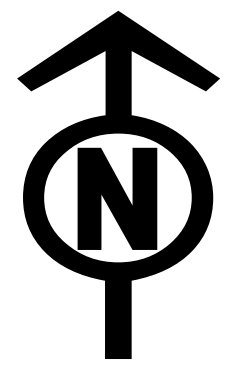
PINS Application Number
EN020027

National Grid Drawing Reference
AENC-LSTC-ENG-DWG-0002

Scale	Sheet Size	Sheet	Issue
1:2,500	A0	SHEET 2 OF 7	C

THE NATIONAL GRID (NORWICH TO TILBURY) ORDER
TREES AND HEDGEROWS TO BE REMOVED AND OR MANAGED PLANS
REGULATION 5(2)(c)
SECTION H (SHEET 3 OF 7,
THURROCK COUNCIL)

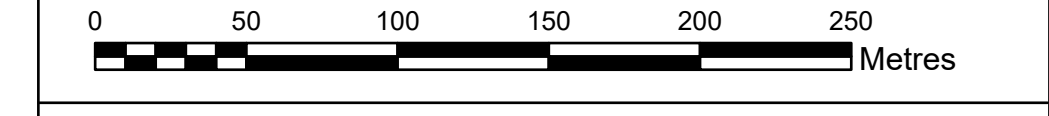
Application Document 2.16



- Legend**
- Local authority boundary
 - Section boundary & local authority boundary
 - Section boundary
 - Sheet index outlines
 - Order Limits
 - Individual Tree Preservation Order
 - Tree Preservation Order groups
 - Project defined ancient woodland as per DCO submission
 - Important hedgerows
- Veteran tree**
- ★ Removed
 - ★ Affected managed
 - ★ Potentially affected
 - ★ Unaffected
- Tree**
- Removed
 - Affected managed
 - Potentially affected
 - Unaffected
- Tree groups**
- Removed
 - Affected managed
 - Potentially affected
 - Unaffected
- Hedgerows**
- Removed
 - Affected managed
 - Potentially affected
 - Unaffected

- Notes**
1. These plans are indicative and the Project will sit within the Order Limits. Due to the need for future flexibility, National Grid will be applying for Order Limits and Limits of Deviation within its DCO, within which any final alignment would lie.
 2. For additional detail on the plan suites, please refer to the Guide to Plans (document reference 2.0), located in the Volume 2 of the DCO application.
 3. This drawing is scaled at paper size A0, therefore any prints taken at smaller sizes will affect accuracy of the measurement units and should not be scaled against.
 4. Spatial locations and details of Tree Preservation Orders have been provided by relevant Local Planning Authorities and their projected spatial locations may differ slightly to those recorded during the arboricultural survey undertaken by the Project. For the avoidance of doubt, references to any tree subject to a Tree Preservation Order on these plans include any such slight differences.
 5. The Tree Preservation Order data illustrated on the plans is limited to the arboriculture study area (which applies a 30 m buffer from the outer edge of the Order Limits).
 6. Reference to any tree, shrub, shrubby, hedgerow, or important hedgerow being removed, affected managed, potentially affected or unaffected is without prejudice to the exercise of any power in relation to such tree, shrub, shrubby, hedgerow, or important hedgerow on the terms of the DCO.
 7. The numbered references to trees comprised in any Individual Tree Preservation Order shown on these plans include any tree to which the relevant line points as well as any tree overlapping any such tree, whether or not a line points to it or not.
 8. For the avoidance of doubt, where the section and/or local authority boundary and/or Order Limits shown on these plans include any tree to which the relevant line points as well as any tree overlapping any such tree, whether or not a line points to it or not.

Coordinate System: British National Grid
Sheet X Centroid Coordinate: 566387 Sheet Y Centroid Coordinate: 163424



BACKGROUND MAPPING INFORMATION HAS BEEN REPRODUCED FROM THE ORDNANCE SURVEY BY PERMISSION OF ORDNANCE SURVEY OF THE CONTROLLER OF HIS MAJESTY'S STATIONERY OFFICE. © CROWN COPYRIGHT AND DATABASE RIGHTS (2025) LICENCE OS100024241 AND AC0000807948.

Issue	Date	Remarks	Drawn	Checked	Approved
C	JUN-2026	For deadline five	TMH	JPC	KR
B	MAY-2026	For deadline four	TMH	JPC	KR
A	AUG-2025	For DCO submission	EOS	JPC	KR

Title

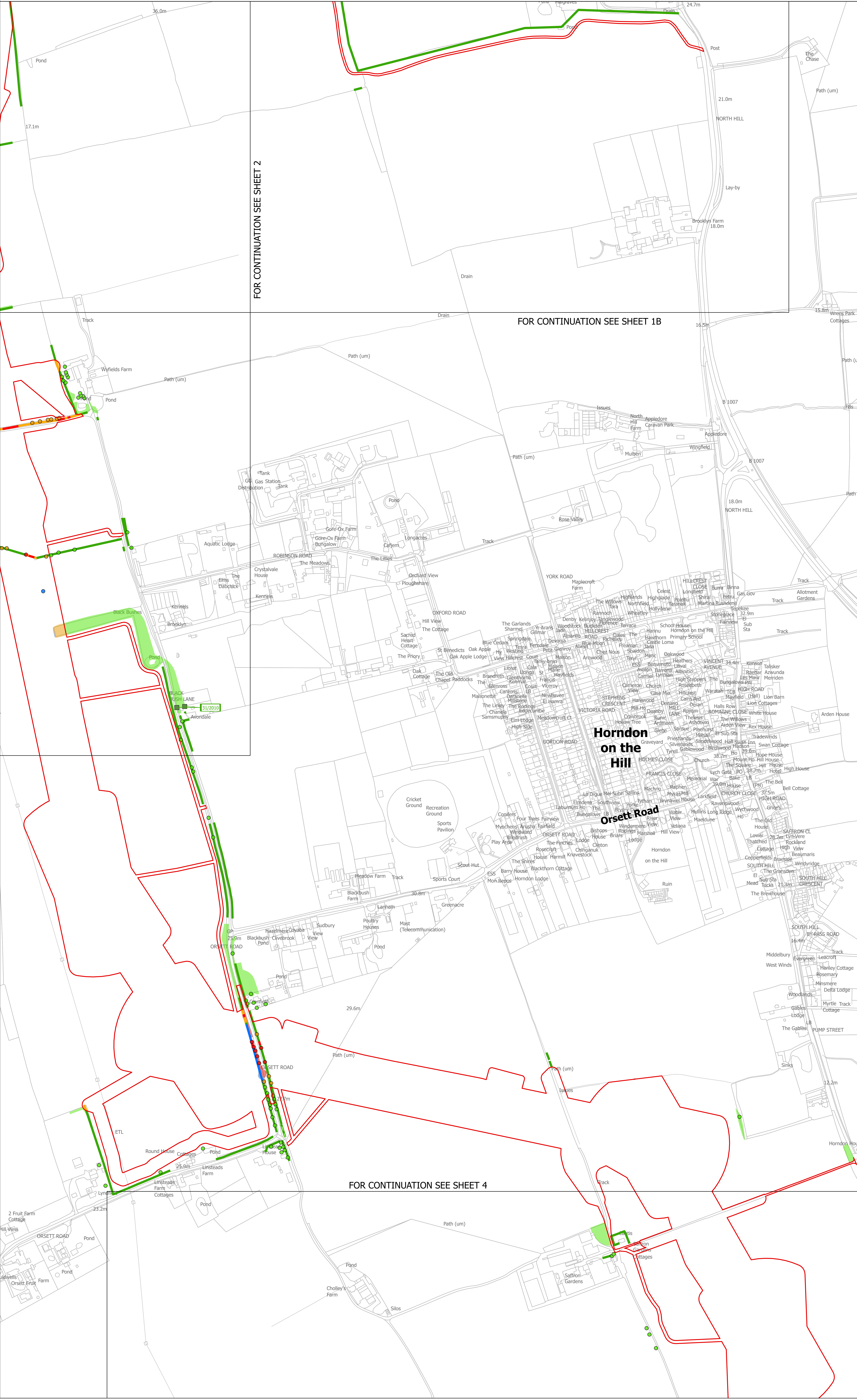
THE NATIONAL GRID (NORWICH TO TILBURY) ORDER
TREES AND HEDGEROWS TO BE REMOVED
AND OR MANAGED PLANS
REGULATION 5(2)(c)
SECTION H (SHEET 3 OF 7,
THURROCK COUNCIL)

nationalgrid

PINS Application Number
EN020027

National Grid Drawing Reference
AENC-LSTC-ENG-DWG-0002

Scale	Sheet Size	Sheet	Issue
1:2,500	A0	SHEET 3 OF 7	C

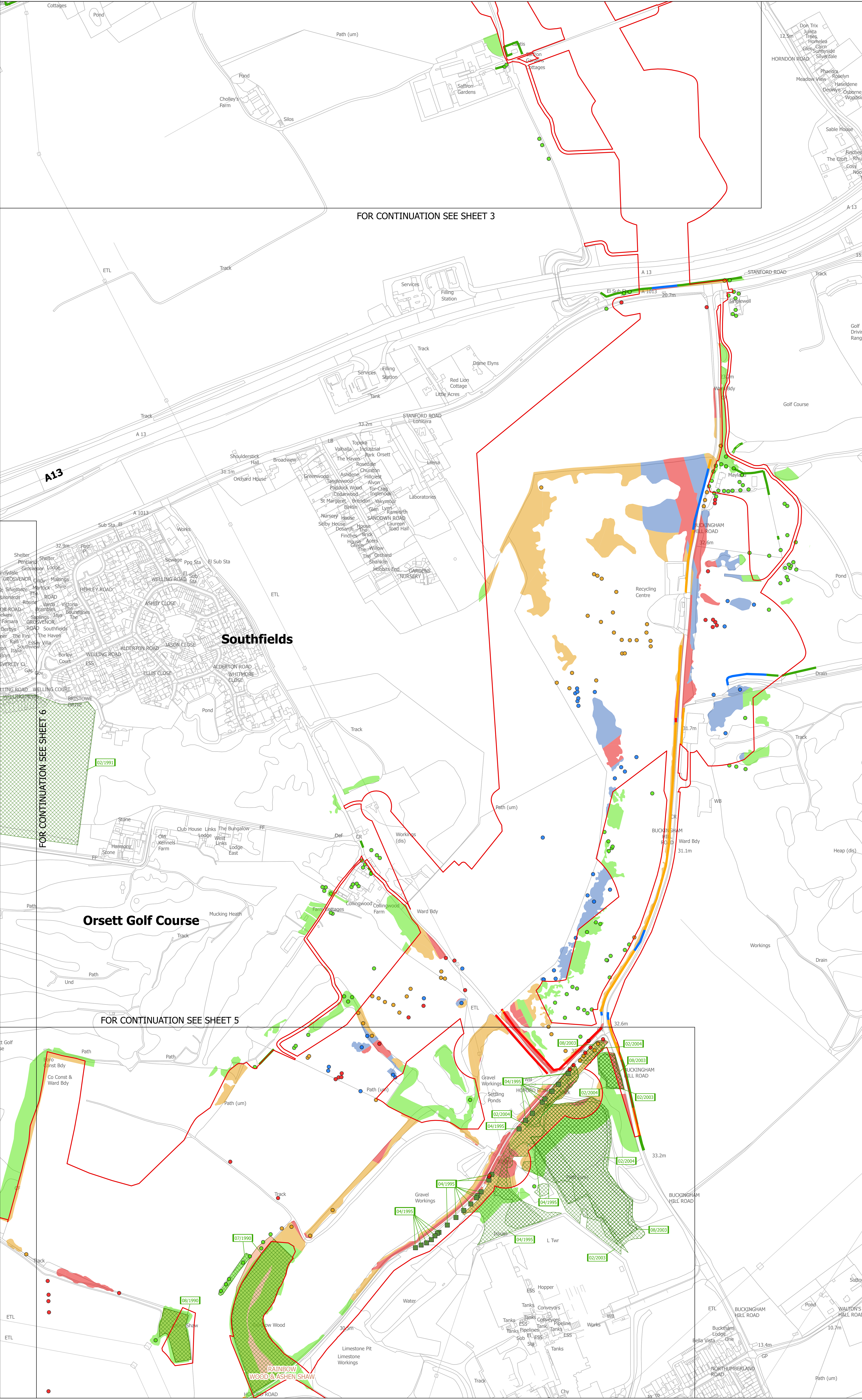
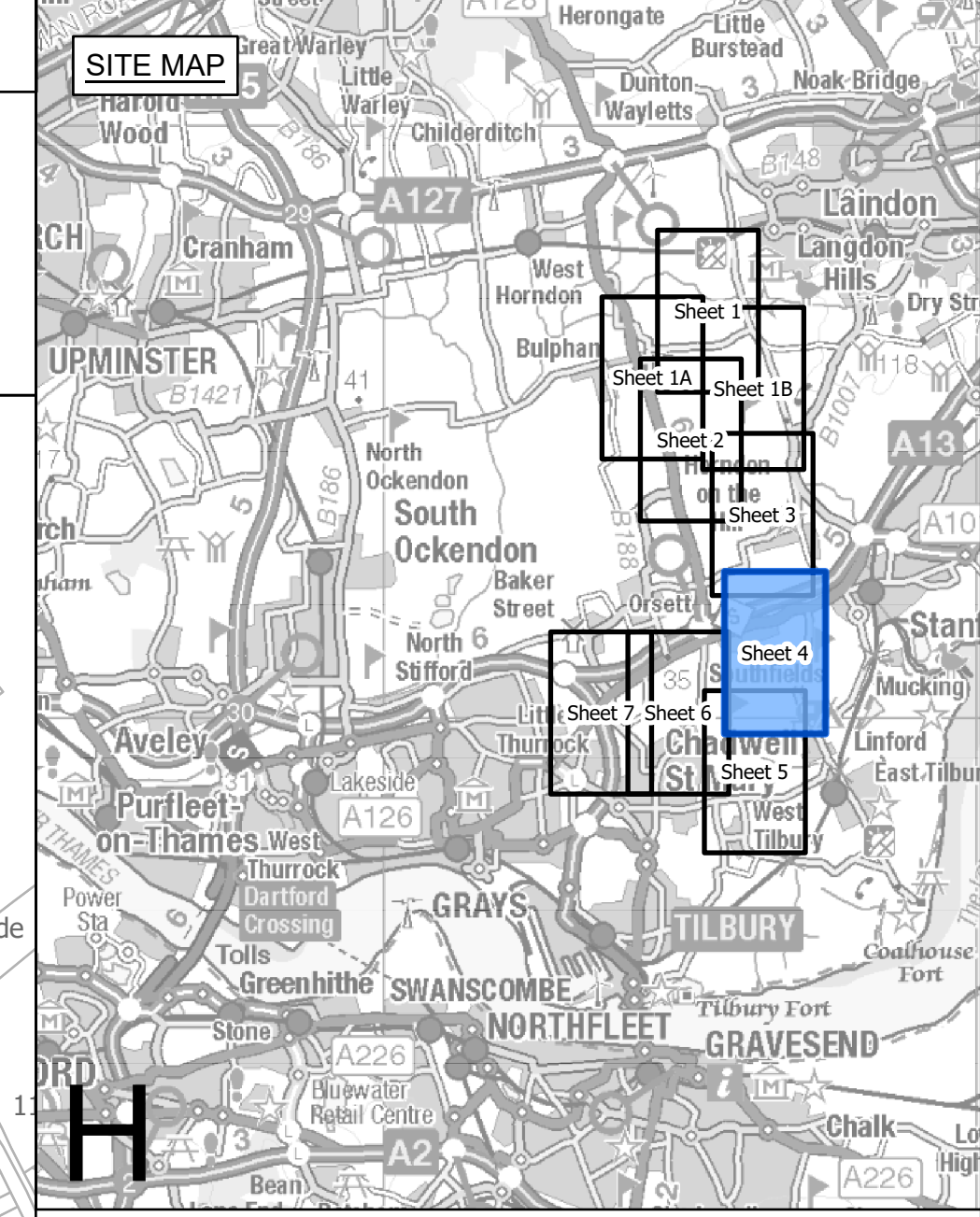
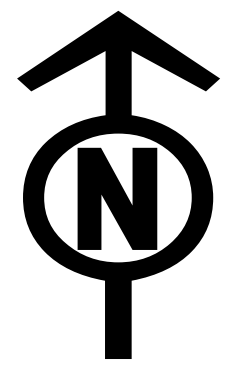


FOR CONTINUATION SEE SHEET 2

FOR CONTINUATION SEE SHEET 1B

FOR CONTINUATION SEE SHEET 4

THE NATIONAL GRID (NORWICH TO TILBURY) ORDER
TREES AND HEDGEROWS TO BE REMOVED AND OR MANAGED PLANS
REGULATION 5(2)(c)
SECTION H (SHEET 4 OF 7,
THURROCK COUNCIL)



Legend

- Local authority boundary
- Section boundary & local authority boundary
- Section boundary
- Sheet index outlines
- Order Limits
- Individual Tree Preservation Order
- Tree Preservation Order groups
- Project defined ancient woodland as per DCO submission
- Important hedgerows

Veteran tree

- Removed
- Affected managed
- Potentially affected
- Unaffected

Tree

- Removed
- Affected managed
- Potentially affected
- Unaffected

Tree groups

- Removed
- Affected managed
- Potentially affected
- Unaffected

Hedgerows

- Removed
- Affected managed
- Potentially affected
- Unaffected

Notes

- These plans are indicative and the Project will sit within the Order Limits. Due to the need for future flexibility, National Grid will be applying for Order Limits and Limits of Deviation within its DCO, within which any final alignment would lie.
- For additional detail on the plan suites, please refer to the Guide to Plans (document reference 2.0), located in the Volume 2 of the DCO application.
- This drawing is scaled at paper size A0, therefore any prints taken at smaller sizes will affect accuracy of the measurement units and should not be scaled against.
- Spatial locations and details of Tree Preservation Orders have been provided by relevant Local Planning Authorities and their projected spatial locations may differ slightly to those recorded during the arboricultural survey undertaken by the Project. For the avoidance of doubt, references to any tree subject to a Tree Preservation Order on these plans include any such slight differences.
- The Tree Preservation Order data illustrated on the plans is limited to the arboriculture study area (which applies a 30 m buffer from the outer edge of the Order Limits).
- Reference to any tree, shrub, shrubby, hedgerow, or important hedgerow being removed, affected managed, potentially affected or unaffected is without prejudice to the exercise of any power in relation to such tree, shrub, shrubby, hedgerow, or important hedgerow on the terms of the DCO.
- The numbered references to trees comprised in any Individual Tree Preservation Order shown on these plans include any tree to which the relevant line points as well as any tree overlapping any such tree, whether or not a line points to it or not.
- For the avoidance of doubt, where the section and/or local authority boundary and/or Order Limits shown on these plans overlap any tree, hedgerow or ancient woodland shown on these plans such that they are partially obscured these plans are to be interpreted as if the tree, hedgerow or ancient woodland in question is not so obscured.

Coordinates System: British National Grid
Sheet X Centroid Coordinate: 566597 Sheet Y Centroid Coordinate: 191086

0 50 100 150 200 250 Metres

BACKGROUND MAPPING INFORMATION HAS BEEN REPRODUCED FROM THE ORDNANCE SURVEY BY PERMISSION OF ORDNANCE SURVEY OF THE CONTROLLER OF HIS MAJESTY'S STATIONERY OFFICE. © CROWN COPYRIGHT AND DATABASE RIGHTS (2025) LICENCE OS100024241 AND AC0000807948.

Issue	Date	Remarks	Drawn	Checked	Approved
C	JUN-2026	For deadline five	TMH	JPC	KR
B	MAY-2026	For deadline four	TMH	JPC	KR
A	AUG-2025	For DCO submission	EOS	JPC	KR

Title

THE NATIONAL GRID (NORWICH TO TILBURY) ORDER
TREES AND HEDGEROWS TO BE REMOVED
AND OR MANAGED PLANS
REGULATION 5(2)(c)
SECTION H (SHEET 4 OF 7,
THURROCK COUNCIL)

nationalgrid

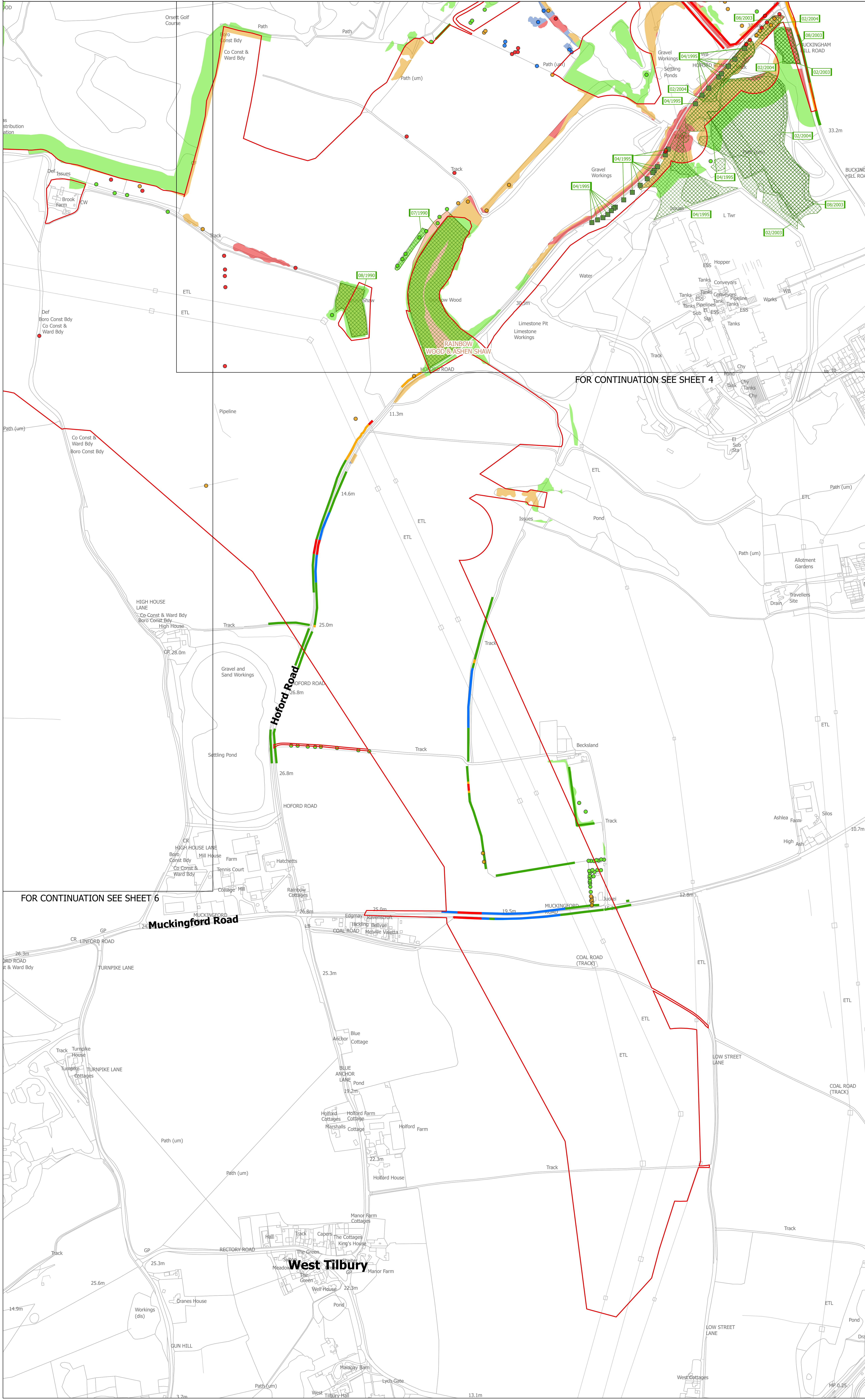
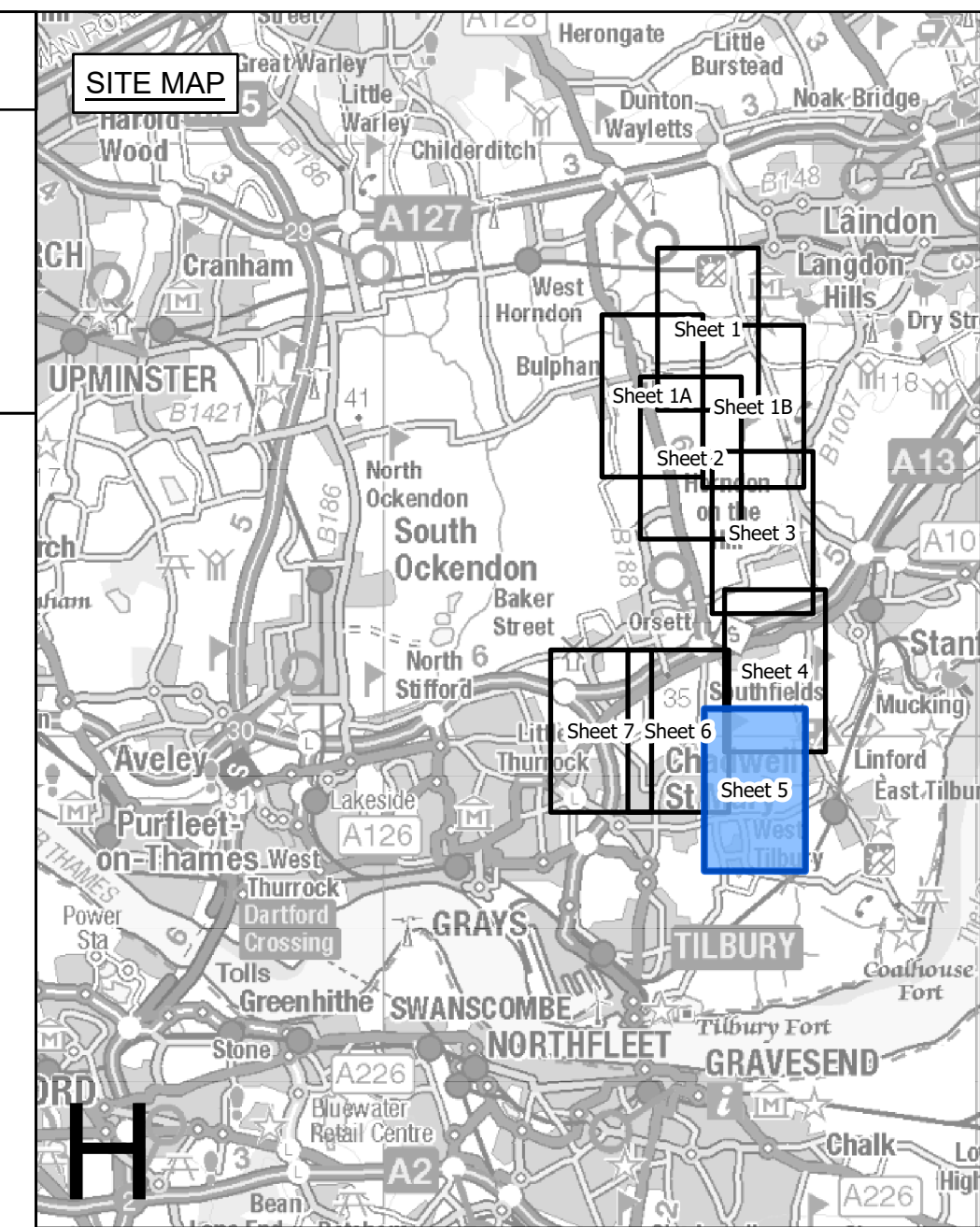
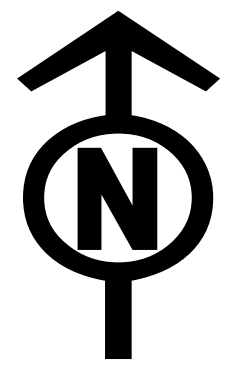
PINS Application Number
EN020027

National Grid Drawing Reference
AENC-LSTC-ENG-DWG-0002

Scale	Sheet Size	Sheet	Issue
1:2,500	A0	SHEET 4 OF 7	C

THE NATIONAL GRID (NORWICH TO TILBURY) ORDER
TREES AND HEDGEROWS TO BE REMOVED AND OR MANAGED PLANS
REGULATION 5(2)(o)
SECTION H (SHEET 5 OF 7,
THURROCK COUNCIL)

Application Document 2.16



Legend

- Local authority boundary
- Section boundary & local authority boundary
- Section boundary
- Sheet index outlines
- Order Limits
- Individual Tree Preservation Order
- Tree Preservation Order groups
- Project defined ancient woodland as per DCO submission
- Important hedgerows

Veteran tree

- ★ Removed
- ★ Affected managed
- ★ Potentially affected
- ★ Unaffected

Tree

- Removed
- Affected managed
- Potentially affected
- Unaffected

Tree groups

- Removed
- Affected managed
- Potentially affected
- Unaffected

Hedgerows

- Removed
- Affected managed
- Potentially affected
- Unaffected

FOR CONTINUATION SEE SHEET 4

FOR CONTINUATION SEE SHEET 6

- Notes**
- These plans are indicative and the Project will sit within the Order Limits. Due to the need for future flexibility, National Grid will be applying for Order Limits and Limits of Deviation within its DCO, within which any final alignment would lie.
 - For additional detail on the plan suites, please refer to the Guide to Plans (document reference 2.0), located in the Volume 2 of the DCO application.
 - This drawing is scaled at paper size A0, therefore any prints taken at smaller sizes will affect accuracy of the measurement units and should not be scaled against.
 - Spatial locations and details of Tree Preservation Orders have been provided by relevant Local Planning Authorities and their projected spatial locations may differ slightly to those recorded during the arboricultural survey undertaken by the Project. For the avoidance of doubt, references to any tree subject to a Tree Preservation Order on these plans include any such slight differences.
 - The Tree Preservation Order data illustrated on the plans is limited to the arboriculture study area (which applies a 30 m buffer from the outer edge of the Order Limits).
 - Reference to any tree, shrub, shrubbery, hedgerow, or important hedgerow being removed, affected managed, potentially affected or unaffected is without prejudice to the exercise of any power in relation to such tree, shrub, shrubbery, hedgerow, or important hedgerow on the terms of the DCO.
 - The numbered references to trees comprised in any Individual Tree Preservation Order shown on these plans include any tree to which the relevant line points as well as any tree overlapping any such tree, whether or not a line points to it or not.
 - For the avoidance of doubt, where the section and/or local authority boundary and/or Order Limits shown on these plans overlap any tree, hedgerow or ancient woodland shown on these plans such that they are partially obscured these plans are to be interpreted as if the tree, hedgerow or ancient woodland in question is not so obscured.

Coordinate System: British National Grid
Sheet X Centroid Coordinate: 566256 Sheet Y Centroid Coordinate: 179075



BACKGROUND MAPPING INFORMATION HAS BEEN REPRODUCED FROM THE ORDNANCE SURVEY BY PERMISSION OF ORDNANCE SURVEY OF THE CONTROLLER OF HIS MAJESTY'S STATIONERY OFFICE. © CROWN COPYRIGHT AND DATABASE RIGHTS (2025) LICENCE OS100024241 AND AC0000807948.

Issue	Date	Remarks	Drawn	Checked	Approved
C	JUN-2026	For deadline five	TMH	JPC	KR
B	MAY-2026	For deadline four	TMH	JPC	KR
A	AUG-2025	For DCO submission	EOS	JPC	KR

Title

THE NATIONAL GRID
(NORWICH TO TILBURY) ORDER
TREES AND HEDGEROWS TO BE REMOVED
AND OR MANAGED PLANS
REGULATION 5(2)(o)
SECTION H (SHEET 5 OF 7,
THURROCK COUNCIL)

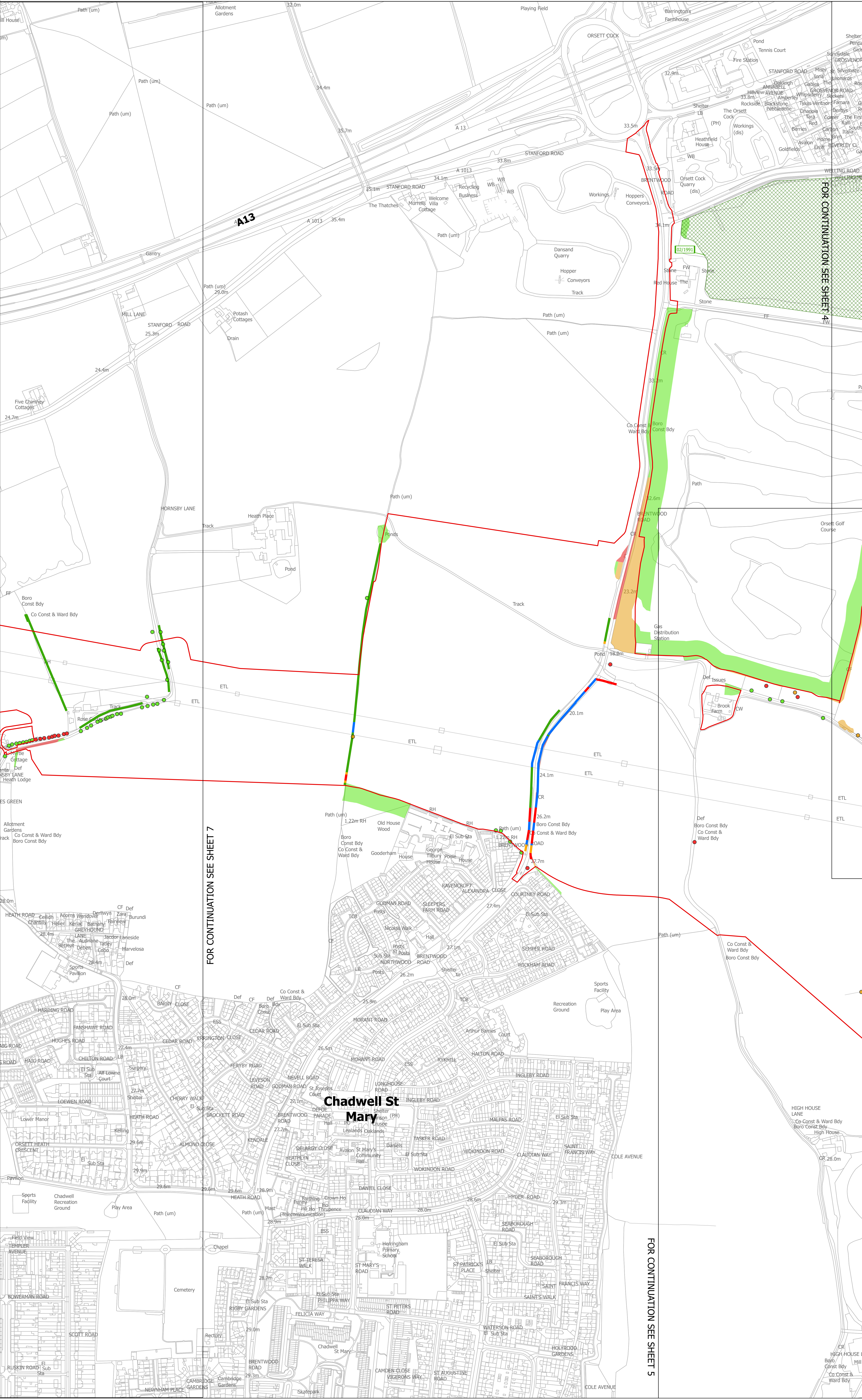
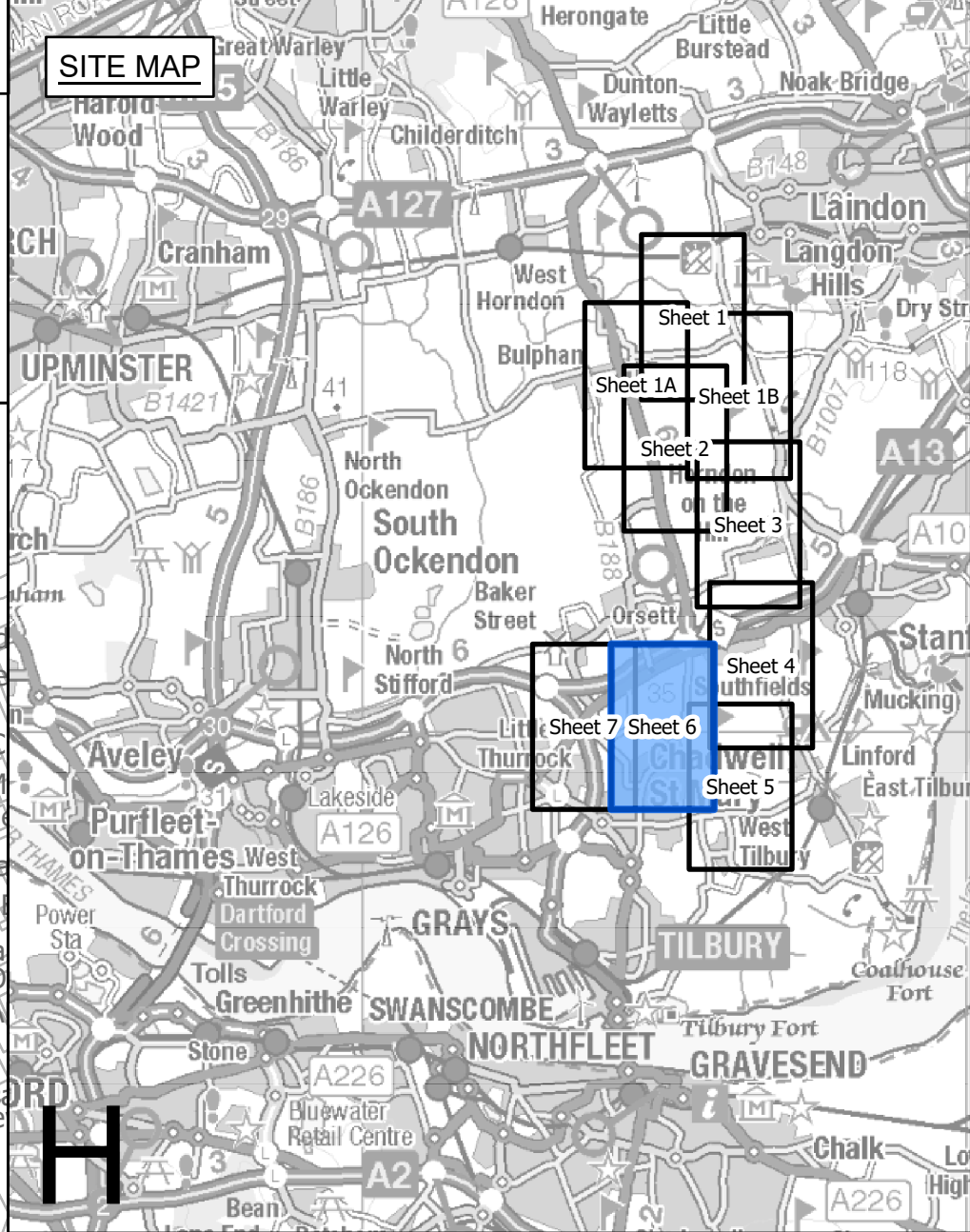
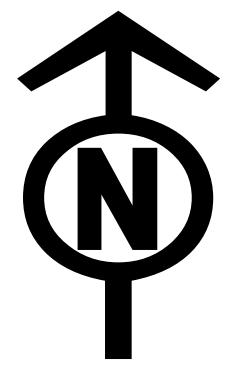
nationalgrid

PINS Application Number
EN020027

National Grid Drawing Reference
AENC-LSTC-ENG-DWG-0002

Scale	Sheet Size	Sheet	Issue
1:2,500	A0	SHEET 5 OF 7	C

THE NATIONAL GRID (NORWICH TO TILBURY) ORDER
TREES AND HEDGEROWS TO BE REMOVED AND OR MANAGED PLANS
REGULATION 5(2)(c)
SECTION H (SHEET 6 OF 7,
THURROCK COUNCIL)



- Legend**
- Local authority boundary
 - Section boundary & local authority boundary
 - Section boundary
 - Sheet index outlines
 - Order Limits
 - Individual Tree Preservation Order
 - Tree Preservation Order groups
 - Project defined ancient woodland as per DCO submission
 - Important hedgerows
 - Veteran tree**
 - ★ Removed
 - ★ Affected managed
 - ★ Potentially affected
 - ★ Unaffected
 - Tree**
 - Removed
 - Affected managed
 - Potentially affected
 - Unaffected
 - Tree groups**
 - Removed
 - Affected managed
 - Potentially affected
 - Unaffected
 - Hedgerows**
 - Removed
 - Affected managed
 - Potentially affected
 - Unaffected

- Notes**
1. These plans are indicative and the Project will sit within the Order Limits. Due to the need for future flexibility, National Grid will be applying for Order Limits and Limits of Deviation within its DCO, within which any final alignment would lie.
 2. For additional detail on the plan suites, please refer to the Guide to Plans (document reference 2.0), located in the Volume 2 of the DCO application.
 3. This drawing is scaled at paper size A0, therefore any prints taken at smaller sizes will affect accuracy of the measurement units and should not be scaled against.
 4. Spatial locations and details of Tree Preservation Orders have been provided by relevant Local Planning Authorities and their projected spatial locations may differ slightly to those recorded during the arboricultural survey undertaken by the Project. For the avoidance of doubt, references to any tree subject to a Tree Preservation Order on these plans include any such slight differences.
 5. The Tree Preservation Order data illustrated on the plans is limited to the arboriculture study area (which applies a 30 m buffer from the outer edge of the Order Limits).
 6. Reference to any tree, shrub, shrubbery, hedgerow, or important hedgerow being removed, affected managed, potentially affected or unaffected is without prejudice to the exercise of any power in relation to such tree, shrub, shrubbery, hedgerow, or important hedgerow on the terms of the DCO.
 7. The numbered references to trees comprised in any Individual Tree Preservation Order shown on these plans include any tree to which the relevant line points as well as any tree overlapping any such tree, whether or not a line points to it or not.
 8. For the avoidance of doubt, where the section and/or local authority boundary and/or Order Limits shown on these plans include any tree to which the relevant line points as well as any tree overlapping any such tree, whether or not a line points to it or not.

Coordinate System: British National Grid
Sheet X Centroid Coordinate: 564983 Sheet Y Centroid Coordinate: 180069

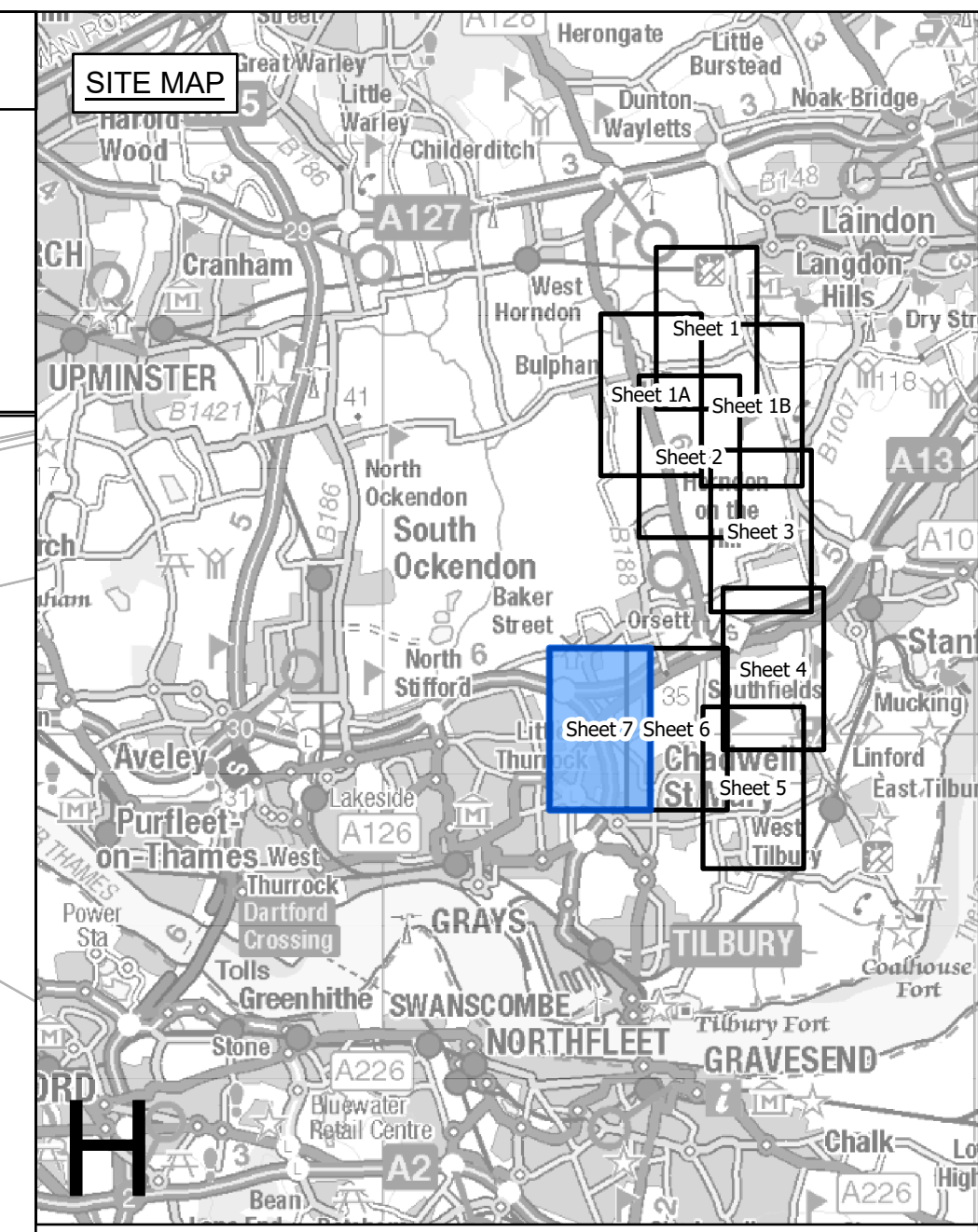
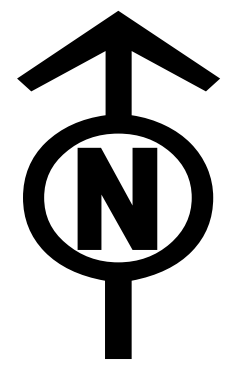
BACKGROUND MAPPING INFORMATION HAS BEEN REPRODUCED FROM THE ORDNANCE SURVEY BY PERMISSION OF ORDNANCE SURVEY OF THE CONTROLLER OF HIS MAJESTY'S STATIONERY OFFICE. © CROWN COPYRIGHT AND DATABASE RIGHTS (2025) LICENCE OS100024241 AND AC0000807948.

Issue	Date	Remarks	Drawn	Checked	Approved
C	JUN-2026	For deadline five	TMH	JPC	KR
B	MAY-2026	For deadline four	TMH	JPC	KR
A	AUG-2025	For DCO submission	EOS	JPC	KR

Title			
THE NATIONAL GRID (NORWICH TO TILBURY) ORDER TREES AND HEDGEROWS TO BE REMOVED AND OR MANAGED PLANS REGULATION 5(2)(c) SECTION H (SHEET 6 OF 7, THURROCK COUNCIL)			
nationalgrid			
PINS Application Number			
EN020027			
National Grid Drawing Reference			
AENC-LSTC-ENG-DWG-0002			
Scale	Sheet Size	Sheet	Issue
1:2,500	A0	SHEET 6 OF 7	C

THE NATIONAL GRID (NORWICH TO TILBURY) ORDER
TREES AND HEDGEROWS TO BE REMOVED AND OR MANAGED PLANS
REGULATION 5(2)(c)
SECTION H (SHEET 7 OF 7,
THURROCK COUNCIL)

Application Document 2.16



Legend

- Local authority boundary
- Section boundary & local authority boundary
- Section boundary
- Sheet index outlines
- Order Limits
- Individual Tree Preservation Order
- Tree Preservation Order groups
- Project defined ancient woodland as per DCO submission
- Important hedgerows

Veteran tree

- Removed
- Affected managed
- Potentially affected
- Unaffected

Tree

- Removed
- Affected managed
- Potentially affected
- Unaffected

Tree groups

- Removed
- Affected managed
- Potentially affected
- Unaffected

Hedgerows

- Removed
- Affected managed
- Potentially affected
- Unaffected

Notes

- These plans are indicative and the Project will sit within the Order Limits. Due to the need for future flexibility, National Grid will be applying for Order Limits and Limits of Deviation within its DCO, within which any final alignment would lie.
- For additional detail on the plan suites, please refer to the Guide to Plans (document reference 2.0), located in the Volume 2 of the DCO application.
- This drawing is scaled at paper size A0, therefore any prints taken at smaller sizes will affect accuracy of the measurement units and should not be scaled against.
- Spatial locations and details of Tree Preservation Orders have been provided by relevant Local Planning Authorities and their projected spatial locations may differ slightly to those recorded during the arboricultural survey undertaken by the Project. For the avoidance of doubt, references to any tree subject to a Tree Preservation Order on these plans include any such slight differences.
- The Tree Preservation Order data illustrated on the plans is limited to the arboriculture study area (which applies a 30 m buffer from the outer edge of the Order Limits).
- Reference to any tree, shrub, shrubby, hedgerow, or important hedgerow being removed, affected managed, potentially affected or unaffected is without prejudice to the exercise of any power in relation to such tree, shrub, shrubby, hedgerow, or important hedgerow on the terms of the DCO.
- The numbered references to trees comprised in any Individual Tree Preservation Order shown on these plans include any tree to which the relevant line points as well as any tree overlapping any such tree, whether or not a line points to it or not.
- For the avoidance of doubt, where the section and/or local authority boundary and/or Order Limits shown on these plans overlap any tree, hedgerow or ancient woodland shown on these plans such that they are partially obscured these plans are to be interpreted as if the tree, hedgerow or ancient woodland in question is not so obscured.

Coordinates System: British National Grid
Sheet X Centroid Coordinate: 663656 Sheet Y Centroid Coordinate: 180069

0 50 100 150 200 250 Metres

BACKGROUND MAPPING INFORMATION HAS BEEN REPRODUCED FROM THE ORDNANCE SURVEY BY PERMISSION OF ORDNANCE SURVEY OF THE CONTROLLER OF HIS MAJESTY'S STATIONERY OFFICE. © CROWN COPYRIGHT AND DATABASE RIGHTS (2025) LICENCE OS100024241 AND AC0000807948.

Issue	Date	Remarks	Drawn	Checked	Approved
C	JUN-2026	For deadline five	TMH	JPC	KR
B	MAY-2026	For deadline four	TMH	JPC	KR
A	AUG-2025	For DCO submission	EOS	JPC	KR

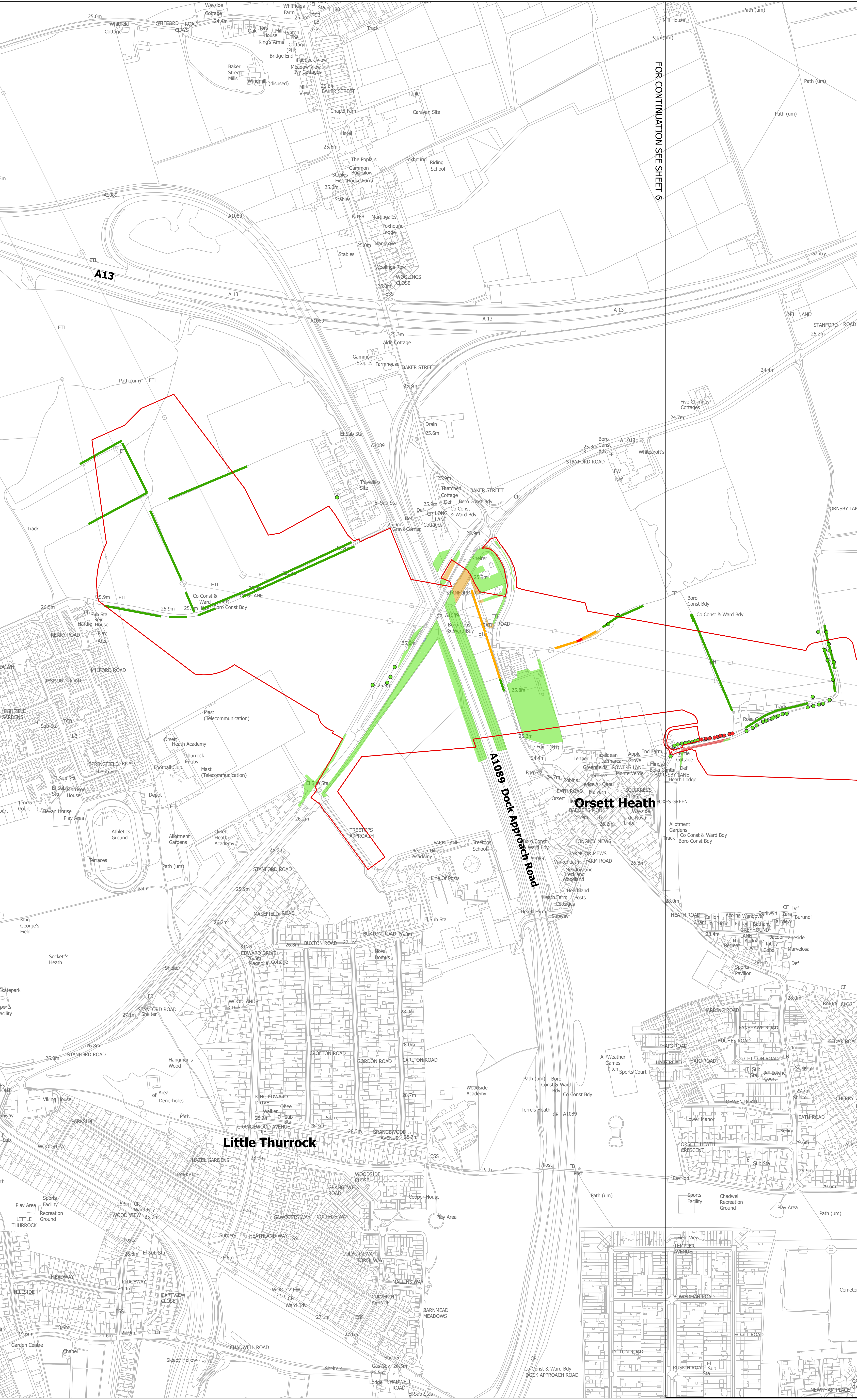
Title
THE NATIONAL GRID (NORWICH TO TILBURY) ORDER
TREES AND HEDGEROWS TO BE REMOVED
AND OR MANAGED PLANS
REGULATION 5(2)(c)
SECTION H (SHEET 7 OF 7,
THURROCK COUNCIL)

nationalgrid

PINS Application Number
EN020027

National Grid Drawing Reference
AENC-LSTC-ENG-DWG-0002

Scale	Sheet Size	Sheet	Issue
1:2,500	A0	SHEET 7 OF 7	C



FOR CONTINUATION SEE SHEET 6

National Grid plc
National Grid House,
Warwick Technology Park,
Gallows Hill, Warwick.
CV34 6DA United Kingdom

Registered in England and Wales
No. 4031152
nationalgrid.com